

Greenfield



Roberti®
OUTDOOR PLEASURE

Greenfield

OUTDOOR PLEASURE

GREENFIELD raccoglie un ricco insieme di proposte per l'arredo residenziale e contract di aree esterne e IN/OUT. Collezioni interpretate con sapiente maestria nella ricerca estetica e materiale al fine di rendere la vita all'aperto un'esperienza di libertà e convivialità rilassata e sospesa nel tempo. Design e materia seguono un filo conduttore di eleganza e perfetta armonia integrandosi nei vari spazi d'ambiente. Lasciatevi ispirare dal lifestyle Roberti.



GREENFIELD offers a rich collection of proposals for the residential and contract interior decoration for outdoor areas and IN/OUT. The various collections perform the result of a skilful and professional production process joined with a concrete research of design and selection of materials to make the outdoor living an experience of free and relaxing conviviality. Design and materials follow an unique line of elegance and perfect harmony integrating themselves in the different living spaces. Be inspired by the Roberti lifestyle.

Greenfield Kollektion bietet ein reiches Sortiment für die Wohnung und für die Kontrakt-Branche an, wie auch für den IN/OUT Bereich. Die Vielfalt der Kollektionen kann die fachliche Meisterschaft, das gelernte Design und die Materialien-Suche bestens ausdrücken. Das Outdoor Leben wird somit eine freie, entspannende Lebenserfahrung die man gerne im Freundeskreis teilt. Design und Materialsuche folgen eine einzige elegante Linie und integrieren sich harmonisch in den verschiedenen Ambiente. Lassen Sie sich von Roberti Lifestyle inspirieren.



GREENFIELD offre un riche ensemble de propositions pour l'ameublement résidentiel et prescription des espaces extérieurs et IN/OUT. Les différentes collections savent interpréter une grande maîtrise et une recherche constante de design et matériaux pour rendre la vie à l'extérieur une expérience unique et relaxante. Design et matière suivent un fil conducteur d'élegance et harmonie et sont capables de s'intégrer dans les situations les plus différentes. Laissez-vous inspirer par le lifestyle de Roberti.

The story begins

searching for

balance
between
body and

SOUL |



indice
table of contents

04 / 27

Lipari

Design: A. De Marco - S. Fanciullacci

28 / 59

Capri

Design: S. Sevellano

60 / 71

Gravity

Design: Technical Emotions

72 / 91

Portofino

Design: Studio Balutto Associati - S. Sevellano

92 / 105

Hamptons Graphics

Design: G.V. Plazzogna - R. Papparotto

106 / 111

Hamptons

Design: G.V. Plazzogna - R. Papparotto

112 / 115

Caribe

Design: Studio Balutto Associati

116 / 125

Samba Rio

126 / 129

Playa

130 / 133

Technical Data & Materials

134 / 139

Fabrics & Covers

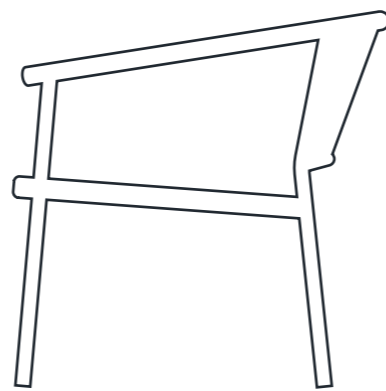
140 / 151

Drawings



01/

Lipari



Un tratto essenziale ed elegante delimita le forme accoglienti di sedie, divano e poltrone. L'intreccio in searope ripercorre sentieri della memoria. Una bellezza abbagliante quanto il sole delle isole.

An essential and elegant trait defines the cosy shapes of the chairs, sofas and armchairs. The Searope weaving goes back over the paths of memory. A dazzling beauty as the sunshine in the islands.

Ein wesentliches und elegantes Merkmal erhebt die gemütliche Form der Stühle, Sofas und Sesseln. Das Geflecht Searope erweckt die Erinnerung an die Vergangenheit. Eine blendende Schönheit wie die Sonne auf den Inseln.

Un trait essentiel et élégant délimite les formes accueillantes des chaises, canapés et fauteuils. Le tressage en Searope revient sur le cours des souvenirs. D'une beauté éblouissante comme le soleil des îles.



Lipari (graphite_oval searope silver) (iride beige_dune beige) art. 4341 poltrona_armchair_Sessel_fauteuil



Lipari (graphite_oval searope silver) (iride beige_dune beige_natte bianco)
art. 4341 poltrona_armchair_Sessel_fauteuil
art. 4342 divano_Sofa_canapé



Lipari (graphite)
art. 4348H tavolino h. 41_low coffee table h. 41_Clubtisch H. 41_table basse h. 41 (hpl slate stone)
art. 4349H tavolino h. 36_low coffee table h. 36_Clubtisch H. 36_table basse h. 36 (hpl slate stone)



hpl slate stone



Lipari (graphite_oval searope silver_baryline pepper)
art. 4331 sedia_chair_Sessel_chaise

Capri (graphite_round searope dark grey)
art. 4326 tavolo_table_Tisch
(hpl light slate)



stay with
friends

Lipari (graphite_oval searope silver_batylne pepper)
art. 4331 sedia_chair_Sessel_chaise

Capri (graphite_round searope dark grey)
art. 4326 tavolo_table_Tisch
(hpl light slate)



Lipari (graphite_oval searope silver) (iride turchese) art. 4331 sedia_chair_Sessel_chaise
Samba Rio (graphite) art. 9586R base tavolo_table base_Tischgestell_base table
art. 9682 piano_top_Tischplatte_plateau (hpt slate stone)



Lipari (graphite_oval searope silver_batyline pepper) art. 4331 sedia_chair_Sessel_chaise



Lipari (white_oval searope pearl) (iride turchese_dune turchesi_natte bianco) art. 4341 poltrona_armchair_Sessel_fauteuil
art. 4342 divano_Sofa_canapé art. 4348H tavolino h. 41_low coffee table h. 41_Clubtrisch H. 41_table basse h. 41 (hpl marble white)
art. 4349H tavolino h. 36_low coffee table h. 36_Clubtrisch H. 36_table basse h. 36 (hpl marble white)



Lipari (white_oval searope pearl)
(iride turchese_dune turchesi_natte bianco)
art. 4341 poltrona_armchair_Sessel_fauteuil



Lipari (white_oval searope pearl) (iride turchese_dune turchesi_natte bianco)
art. 4341 poltrona_armchair_Sessel_fauteuil



Lipari (white_oval searope pearl_batyline walnut) (dune turchesi_natte bianco) art. 4341 poltrona_armchair_Sessel_fauteuil
art. 4342 divano_Sofa_canapé art. 4348H tavolino h. 41_low coffee table h. 41_Clubtrisch H. 41_table basse h. 41 (hpl marble white)
art. 4349H tavolino h. 36_low coffee table h. 36_Clubtrisch H. 36_table basse h. 36 (hpl marble white)





FREE yourself

and listen to
your _____ feelings

Lipari (white_oval searope pearl) (dune turchesi)
art. 4331 sedia_chair_Sessel_chaise
art. 9775 tavolo_table_Tisch (hpl marble white)



Lipari (white_oval searope pearl) (dune turchesi) art. 4331 sedia_chair_Sessel_chaise
art. 9775 tavolo_table_Tisch (hpl marble white)



hpl marble white



Lipari (white_oval searope pearl) (dune turchesi)
art. 4331 sedia_chair_Sessel_chaise

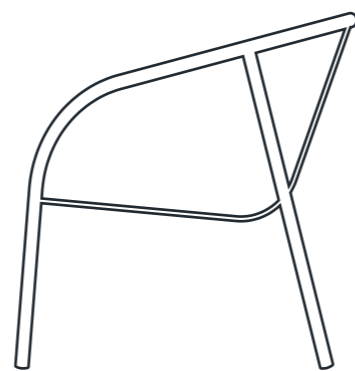


Lipari (white_oval searope pearl_batyline walnut)
art. 4331 sedia_chair_Sessel_chaise
art. 4349H tavolino_low coffee table_Clubtisch_table basse (hpl marble white)





02 Capri



La progettualità delle linee rivisita e reinterpreta uno stile di vita intramontabile. Scenari unici evocati da una collezione sobria e glamour allo stesso tempo; vitale ed inimitabile nel suo unico mix di eleganza internazionale.

The planning of the lines revisits and expresses a timeless lifestyle. Unique scenarios evoked by a glamorous and clean collection at the same time, vital and incomparable in its mix of international elegance.

Die Kreativität der Linien erneuert sich und bietet einen zeitlosen Lebensstil an. Einzigartige Szenarien werden von der nüchternen Kollektion mit Glamour hervorgerufen; lebenswichtig und unvergleichlich in seinem außergewöhnlichem internationalem Mix.

La conception des lignes revisite et réinterprète un style de vie intemporel. Un scénario unique évoqué par une collection sobre et glamour au même temps; vitale et incomparable dans le mix de élégance internationale.



Capri (graphite_round searope dark grey) (iride beige_dune beige)



Capri (graphite_round searope dark grey) (iride beige_dune beige) art. 4311 poltrona_armchair_Sessel_fauteuil
art. 4312 divano_Sofa_canapé art. 4318H tavolino h. 36_low coffee table h. 36_Clubtisch H. 36_table basse h. 36 (hpl slate stone)
art. 4319H tavolino h. 45_low coffee table h. 45_Clubtisch H. 45_table basse h. 45 (hpl slate stone)



Capri (graphite_round searope dark grey) (iride beige_dune beige) art. 4311 poltrona_armchair_Sessel_fauteuil

Capri (graphite) art. 4319H tavolino_low coffee table_Clubtisch_table basse (hpl slate stone)





Dream

about

Capri (graphite_round searope dark grey)
(iride beige_dune beige)
art. 4312 divano_Sofa_canapé



Capri (white round searope pearl) (petra panna)
art. 4315 poltrona relax relax armchair Relaxsessel fauteuil relax art. 4316 pouf Höcker



what makes you
feel good

be
more
relaxed

Capri (white_round searope pearl)
art. 4315 poltrona relax_relax armchair
Relaxsessel_fauteuil relax
art. 4316 pouf_Hocker





Capri (graphite_round searope dark grey)
art. 4301 sedia_chair_Sessel_chaise
Lipari (graphite) art. 9777 tavolo_table_Tisch (hpl slate stone)



Capri (graphite_round searope dark grey)
art. 4301 sedia_chair_Sessel_chaise
Lipari (graphite) art. 9777 tavolo_table_Tisch (hpl slate stone)





Capri (graphite_round searope dark grey)
art. 4301 sedia_chair_Sessel_chaise
art. 4318H tavolino h. 36_low coffee table h. 36_Clubtrisch
H. 36_table basse h. 36 (hpl slate stone)
art. 4319H tavolino h. 45_low coffee table h. 45_Clubtrisch
H. 45_table basse h. 45 (hpl slate stone)



take
your
time



Capri (graphite_round searope dark grey)
art. 4305 sgabello_bar stool_Bar-Hocker_tabouret bar

Samba Rio (graphite)
art. 9783 base tavolo_bar_high bar table base
Bar-Tischgestell_base table

art. 9682 piano_top_Tischplatte_plateau
(hpl marble white)



Capri (graphite_round searope dark grey)
art. 4305 sgabello _bar stool_Bar-Hocker_tabouret bar



Capri (white_round searope pearl) (oceano_emerald) art. 4311 poltrona_armchair_Sessel_fauteuil
art. 4312 divano_Sofa_canapé art. 4318H tavolino h. 36_low coffee table h. 36_Clubtisch H. 36_table basse h. 36 (hpl marble white)
art. 4319H tavolino h. 45_low coffee table h. 45_Clubtisch H. 45_table basse h. 45 (hpl marble white)

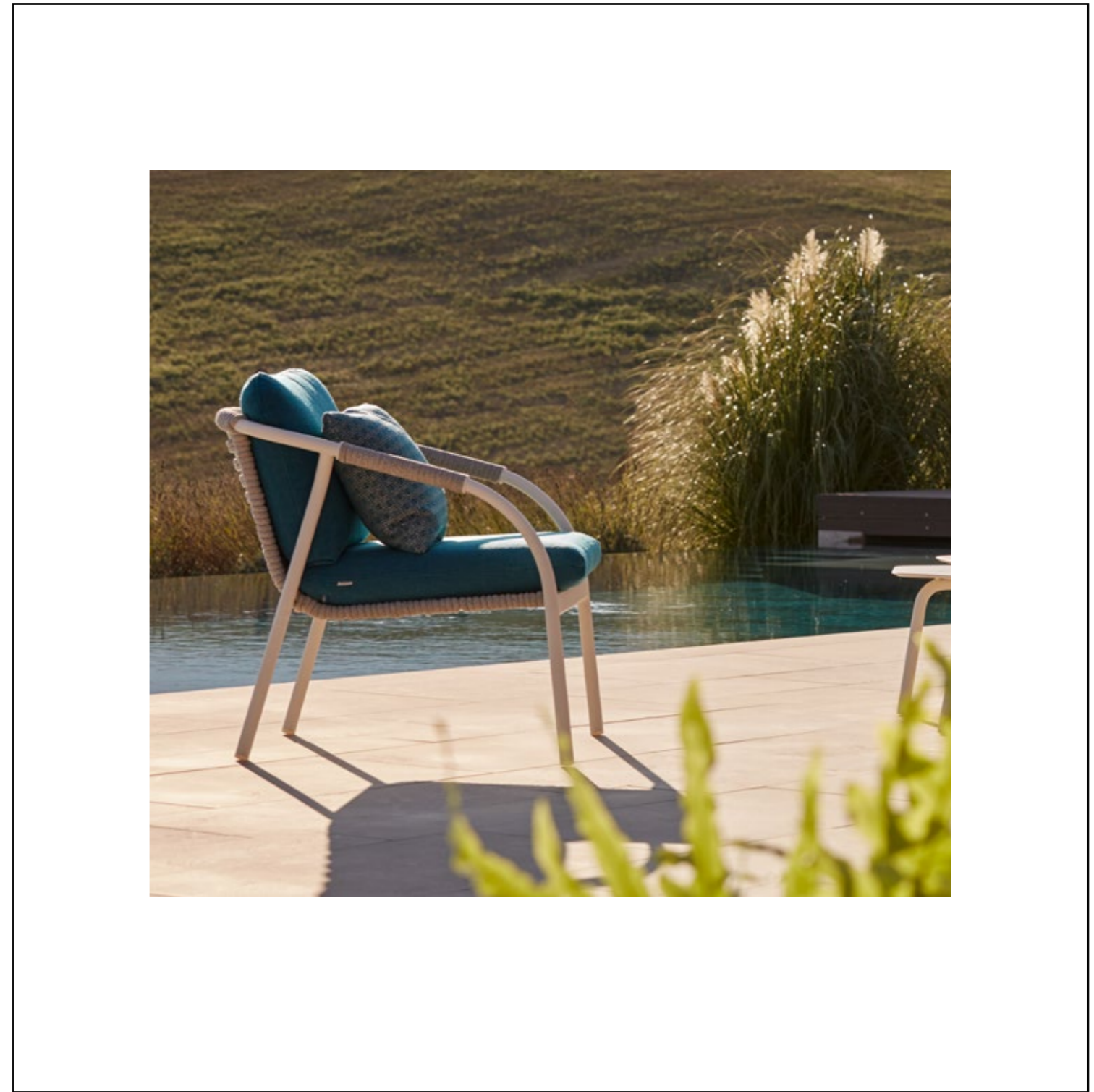


Capri (white_round searope pearl) (oceano_emerald) art. 4311 poltrona_armchair_Sessel_fauteuil
 art. 4312 divano_Sofa_canapé art. 4318H tavolino h. 36_low coffee table h. 36_Clubtisch H. 36_table basse h. 36 (hpl marble white)
 art. 4319H tavolino h. 45_low coffee table h. 45_Clubtisch H. 45_table basse h. 45 (hpl marble white)

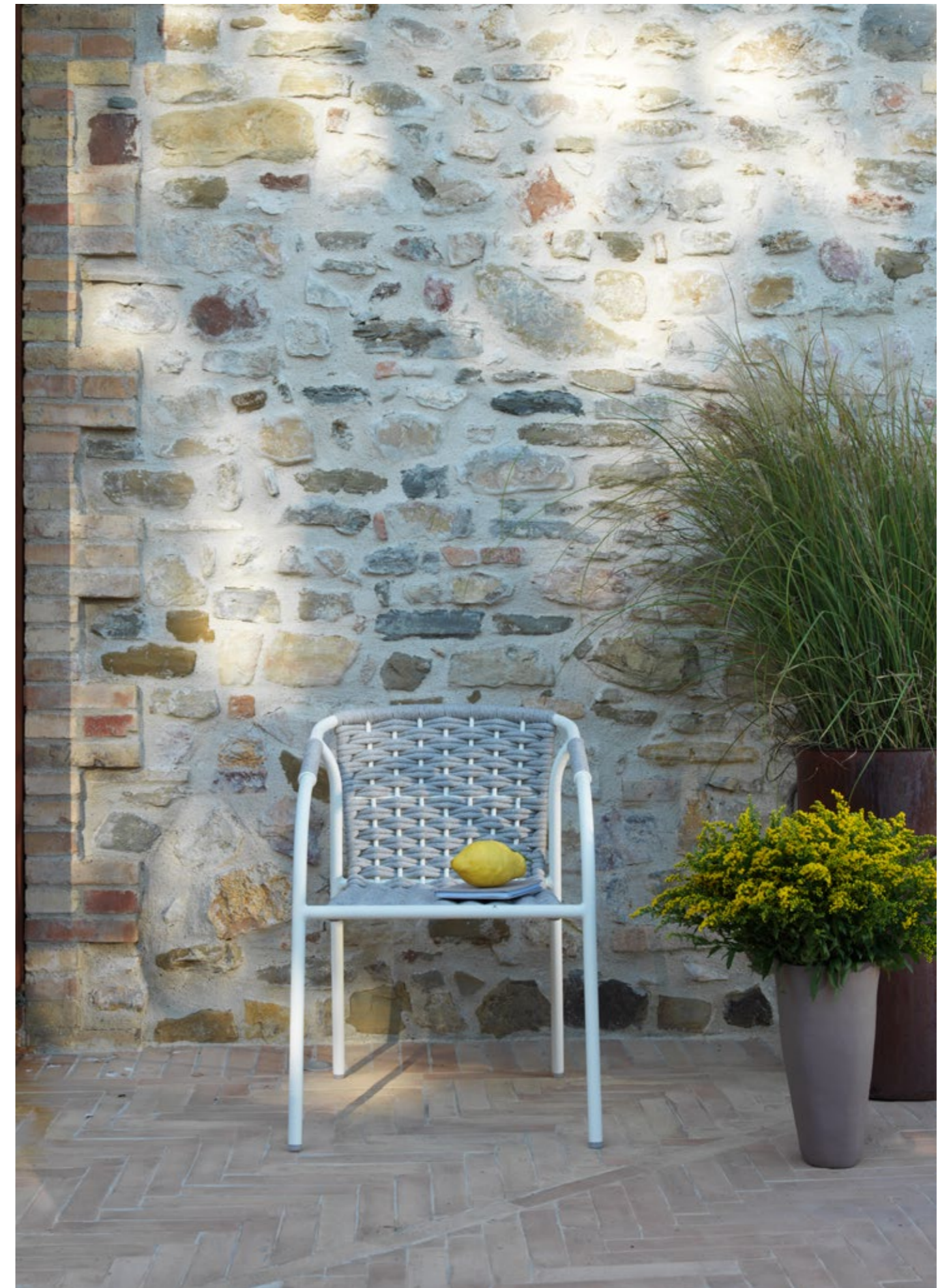
Capri (round searope pearl) (hpl marble white)



Capri (white_round searope pearl) (ocean_o_ emerald) art. 4311 poltrona_ armchair_ Sessel_ fauteuil
art. 4312 divano_ Sofa_ canapé art. 4318H tavolino h. 36_low coffee table h. 36_Clubtrisch H. 36_table basse h. 36 (hpl marble white)
art. 4319H tavolino h. 45_low coffee table h. 45_Clubtrisch H. 45_table basse h. 45 (hpl marble white)

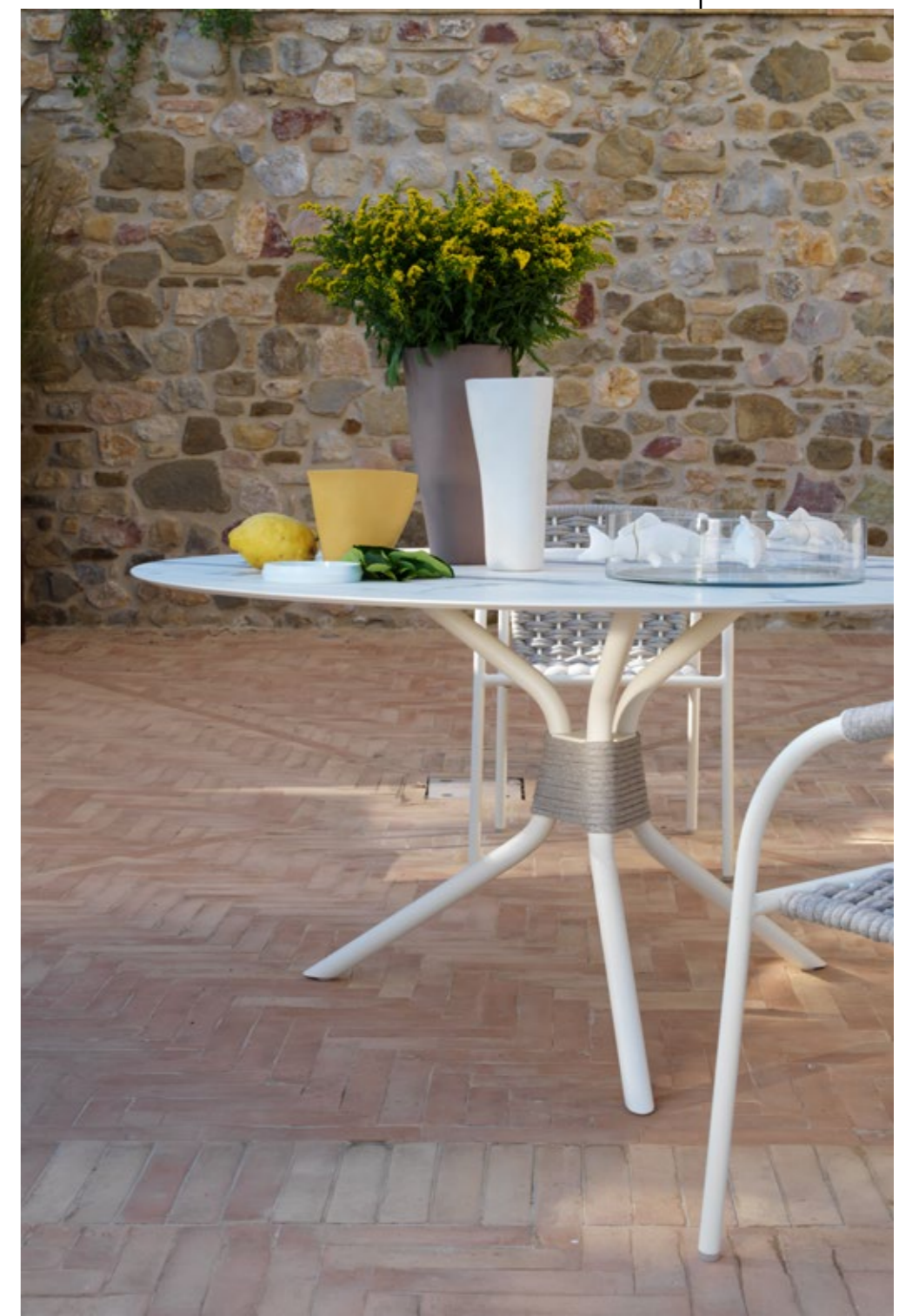


Capri (white_round searope pearl)
art. 4301 sedia_chair_Stuhl_chaise
art. 4326 tavolo_table_Tisch (hpl marble white)



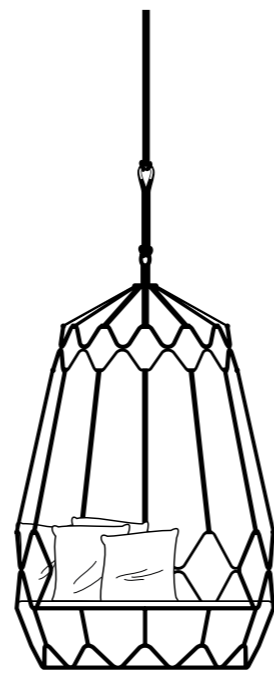


Capri (white_round searope pearl)
art. 4301 sedia_chair_Sessel_chaise
art. 4326 tavolo_table_Tisch (hpl marble white)





03 Gravity



Un divano sospeso che diventa uno spazio intimo e accogliente dove affidarsi al leggero dondolare per un totale rilassamento.

The new swing-sofa has an intimate welcoming space where you can relax on a light rocking.

Das neue Swing-Sofa ist eine gemütliche und vertraute Nische für die volle Entspannung durch ein leichtes Schaukeln.

Le Swing-Sofa offre un coin accueillant et intime pour se relaxer avec un léger balancement.



Gravity (graphite) (tricot nero_arabesque) art. 9882 divano_Sofa_canapè



Gravity (graphite_nautic rope black) (tricot nero_kristal nero_arabesque)
art. 9881 divano - dondolo sospeso_Swing-sofa

Gravity (champagne) (tricot nero_kristal nero_righe beige)
art. 9881 divano dondolo_Swing-sofa



Gravity (graphite_nautic rope black)
(tricot nero_kristal nero_arabesque)



Gravity (champagne_nautic rope sand)
(tricot nero_kristal nero_righe beige)

enjoy
nature

Gravity (champagne_nautic rope sand)
art. 9880 divano-dondolo completo di struttura portante
swing-sofa with supporting frame_mit Gestell_avec structure de support

art. 9885 tavolino_coffee table_Couchtisch_table basse
(aluminum top)





Gravity (champagne_nautic rope sand) (trama bianca_pistacchio_rombi verdi)
art. 9881 divano - dondolo sospeso_Swing-sofa



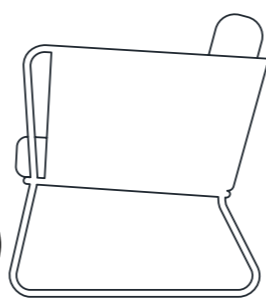
Gravity (champagne) (azzurro mare_trama bianca_orient azzurro)
art. 9882 divano_Sofa
art. 9886 tavolino_coffee table_Couchtisch_table basse (aluminum top)



Gravity (champagne)
art. 9885 tavolino_coffee table_Couchtisch_table basse (aluminum top)



04/Portofino



Dalla cultura del mare nasce la collezione Portofino; terra, cielo ed il blu del mare: questi i colori proposti per arredi dal gusto mediterraneo.

The Portofino collection comes from the seafaring culture; it has the colours of the earth, of the clear sky and of the deep blue water: a true mediterranean style.

Die Kollektion Portofino kommt von einem Seemanns-Lebenstil: hat die Farben von der Erde, vom Himmel und tiefes blaues Wasser: echtes mediterrän Styl.

La collection Portofino a ses origines dans la culture marine: les couleurs de la terre, du ciel clair et le bleu de l'eau. Un véritable style méditerranéen.



Portofino (terra_nautic rope sand) (pistacchio)

art. 9770 altalena con funi_swing whith ropes_Hängeschaukel mit Seil_balançoire avec cordes

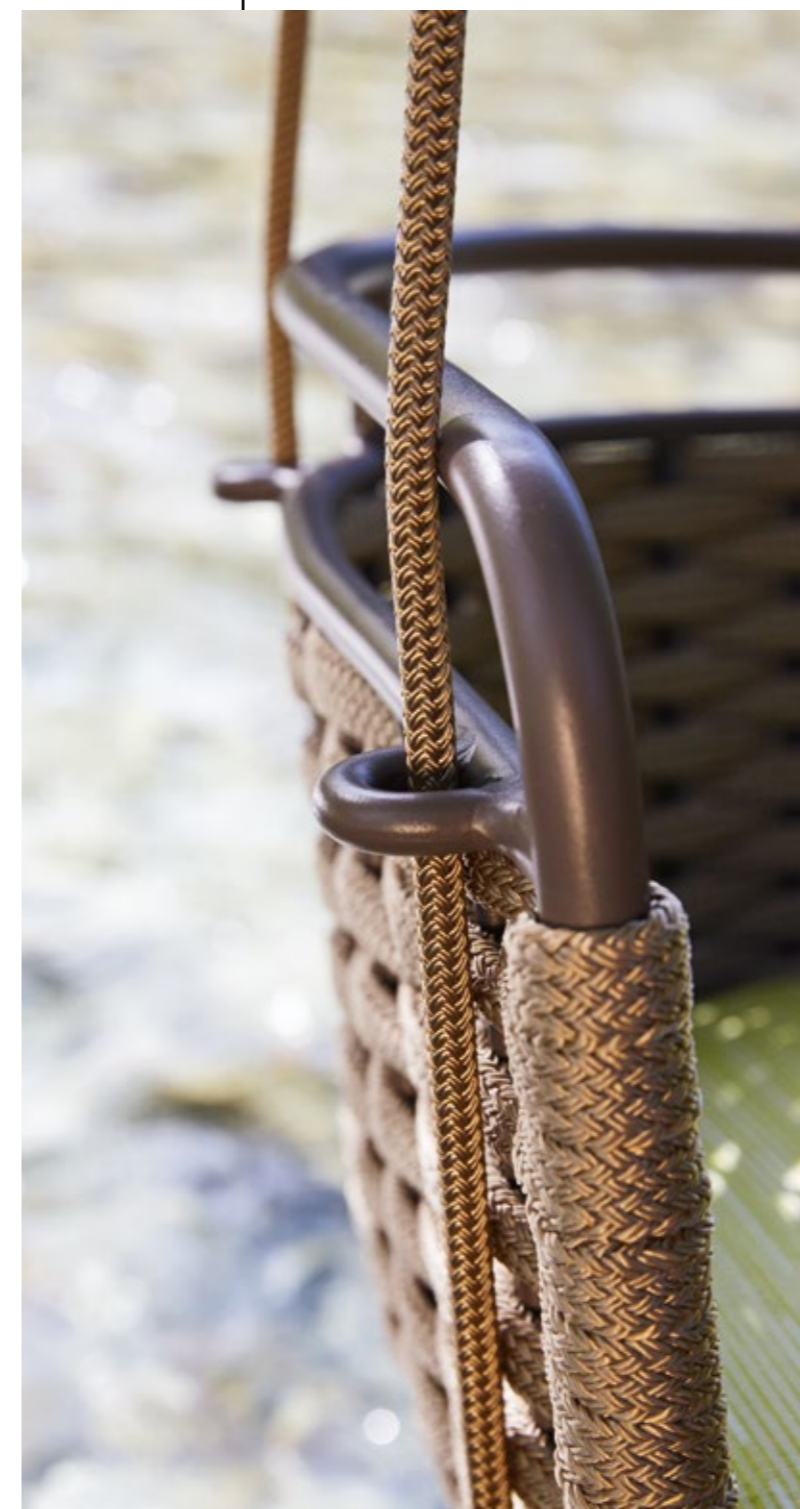


Portofino (terra_nautic rope sand) (pistacchio)
art. 9770 altalena con funi _swing whith ropes_Hängeschaukel mit Seil_balanoire avec cordes



Portofino (terra_nautic rope sand) (onde azzurro)
art. 9770 altalena con funi_swing whith ropes_Hängeschaukel mit Seil_balançoire avec cordes

Portofino (terra_nautic rope sand) (menta)
art. 9770 altalena con funi_swing whith ropes_Hängeschaukel mit Seil_balançoire avec cordes



just
breathe



Portofino (terra_nautic rope sand) (azzurro mare_righe azzurro_bianco)

art. 9768 Day-bed con baldacchino e 2 tavolini

Canopied Day-bed with sun protection and 2 side tables

Day-Bed mit Himmel-Sonnenschutz und 2 Seitentische

Day-bed avec baldaquin-parasol et 2 petites tables

Portofino (terra_nautic rope sand)



Portofino (terra_nautic rope sand) (petra sabbia_petra azzurro_onde azzurro)
art. 9766 day-bed con 2 tavolini_day-bed with 2 side tables_Day-Bed mit 2 Seitentische_day-bed avec 2 petites tables



Portofino (terra_nautic rope sand) (petra azzurro_onde azzurro_petra sabbia)
art. 9742 art. 9743 divano_Sofa_canapé
art. 9746 tavolino_coffee table_Couchtisch_table basse (hpl corten)





Portofino (terra_nautic rope sand) (mosaic oromix_kristal oromix)
art. 9741 poltrona_armchair_Sessel_fauteuil art. 9742 divano_Sofa_canapé
art. 9745 tavolino_coffee table_Couchtisch_table basse (hpl corten)



Portofino (terra_nautic rope sand)
art. 9740/B sedia con braccioli_armchair_Armliehnstuhl_Chaise avec accoudoirs
art. 9776 tavolo_table_Tisch (hpl corten)

Portofino (terra_nautic rope sand)
art. 9740_sedia_chair_Stuhl_chaise



Portofino (terra_nautic rope sand)
art. 9740/B sedia con braccioli_armchair_Armliehnstuhl_chaise avec accoudoirs



Take it

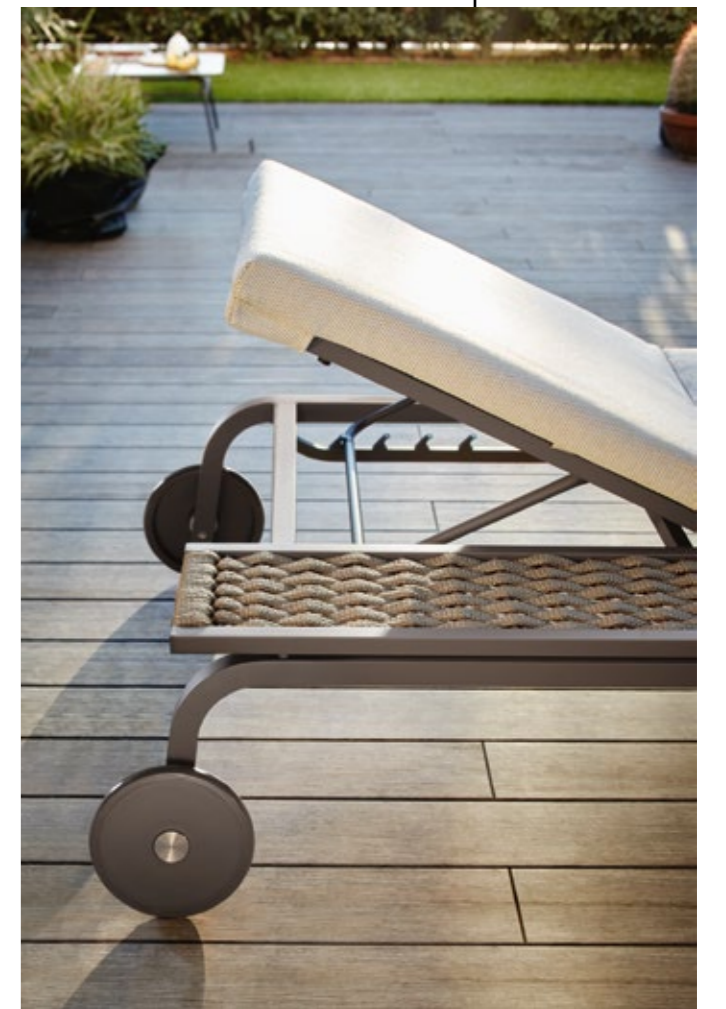
slow



Portofino (terra_nautic rope sand) (mosaic oromix)
 art. 9749 lettino_sun bed_Sonnenliege_bain de soleil
 art. 9748 vassoio_tray_Tablett_plateau



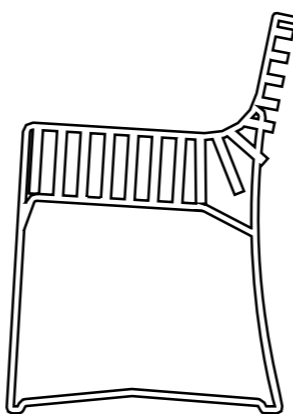
Portofino (terra)
 art. 9748 vassoio_tray_Tablett_plateau
 art. 9749R lettino con ruote_sun bed with wheels_Sonnenliege mit Räder_bain de soleil avec roues





05/

Hamptons Graphics



Raffinato ed originale nelle virtuose elaborazioni delle strutture.

The skilled formulation of the lines makes the collection sophisticated and unique.

Die raffinierte und originale Verarbeitung bietet einen überfeinerten Anschein.

La savante élaboration des lignes des structures donne à l'ensemble un ton sophistiqué et unique.



Hamptons Graphics (white) (mosaic blu_kristal blu_tricot blu)
art. 9732 divano_Sofa_canapé



Hamptons Graphics (white) (mosaic blu_kristal blu_tricot blu)
art. 9732 divano_Sofa_canapé
art. 9731 poltrona_armchair_Sessel_fauteuil

design
your
comfort zone



Hamptons Graphics (coffee) (brownies_noce_flowers)
art. 9731 poltrona_armchair_Sessel_fauteuil
art. 9732 divano_Sofa_canapé
art. 9736 tavolino_side table_Clubtisch_table basse
(laquered glass top)
art. 9735 tavolino quadrato_square coffee table_Ecktisch
_table basse carrée (laquered glass top)



Hamptons Graphics (coffee) (mosaic ocra_ kristal ocra
_tricot ocra)
art. 9734 divano_Sofa_canapé
art. 9739H tavolino_side table_Clubtisch_table basse (hpl corten)



Hamptons Graphics (white) (nautic stripe white) art. 9734 divano_Sofa_canapé
art. 9735H | art. 9739H tavolino_side table_Clubtisch_table basse (hpl white)



Hamptons Graphics (coffee) (nautic stripe taupe)
art. 9751 sedia_chair_Stuhl_chaise
art. 9727 tavolo_table_Tisch (hpl corten)



be creative

Hamptons Graphics (white) (mosaic blu)
art. 9750 sedia_chair_Stuhl_chaise
art. 9730 tavolo_table_Tisch (hpl white)



Hamptons Graphics (white) (mosaic blu)
art. 9750 sedia_chair_Stuhl_chaise
art. 9730 tavolo_table_Tisch (hpl white)

Hamptons Graphics (coffee) (nautic stripe taupe)
art. 9751 sedia_chair_Stuhl_chaise



Hamptons Graphics (white) (mosaic blu)
art. 9750 sedia_chair_Stuhl_chaise



06/ Hamptons

Semplicemente sontuoso nelle forme e nei preziosi materiali.

Rich materials and refined forms: simply luxurious.

Hochwertige Materialien und breite Formen: einfach prächtig.

Matières et formes très riches: tout simplement somptueux.



Hamptons (sunweave perla) (natte azzurro)
art. 9619 divano_Sofa_canapé



Hamptons (sunweave bianco perla) (natte bianco_sand_petra azzurro_mosaic blu)
art. 9620 divano_corner sofa_Rundeck Sofa_canapé d'angle
art. 9607 tavolino_coffee table_Couchtisch_table basse

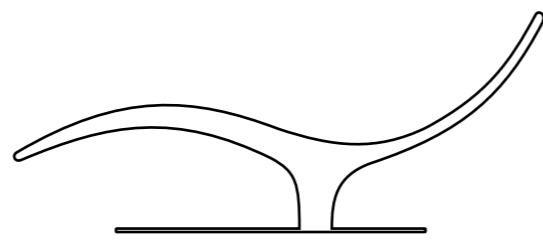
fill
up
with light



Hamptons (sunweave bianco perla)
art. 9625 poltrona_armchair_Sessel_fauteuil
art. 9626 pouf_Hocker



07/Caribe



Una chaiselongue con un design inimitabile.

A chaise longue with an incomparable design.

Eine Chaiselongue mit einem unvergleichlichem Design.

La chaise longue au design inimitable



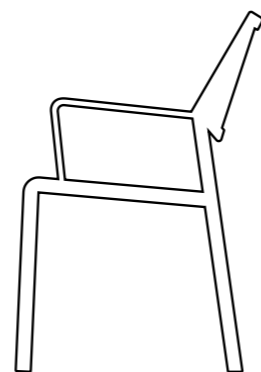
Caribe (sunloom chocolate)
art. 9578 chaise longue



Take **care**
of your
body



08/Samba Rio



Modelli essenziali ed eleganti, con forme equilibrate e funzionali.

Functional and elegant models with minimal design and high comfort.

Modelle mit einfachem, elegantem Design und hohem Komfort.

Des modèles avec des lignes sobres et élégantes pour un grand confort.



Samba Rio (white)

art. 9760 sedia con braccioli_armchair_Armehnstuhl_chaise avec accoudoir

art. 9773 base tavolo_table base_Tischgestell_base table

art. 9682 piano_top_Tischplatte_plateau (hpl white)



Samba Rio (white) art. 9761 sedia_chair_Stuhl_chaise
art. 9774 base tavolo_table base_Tischgestell_base table
art. 9689 piano_top_Tischplatte_plateau (hpl white)





Samba Rio (white)
 art. 9761 sedia_chair_Stuhl_chaise
 art. 9773 base tavolo_table base_Tischgestell_base table
 art. 9686 piano_top_Tischplatte_plateau (hpl white)



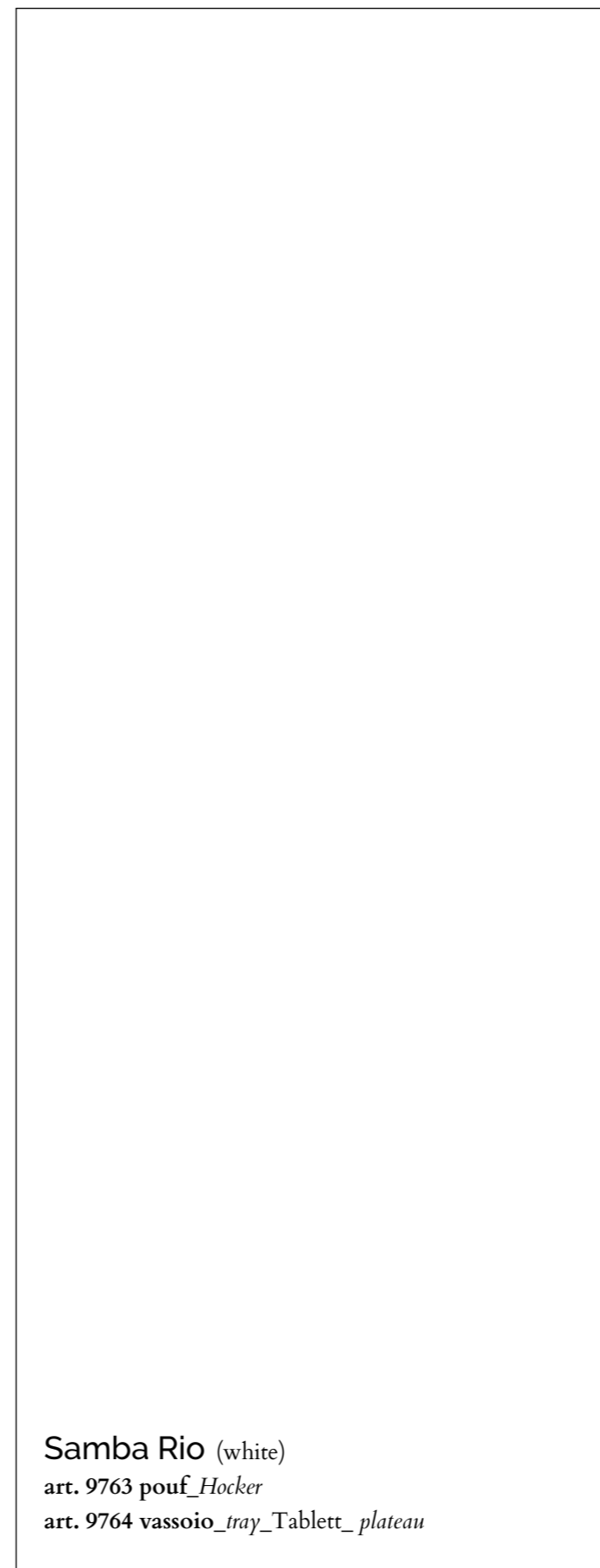
art. 9760 sedia con braccioli_armchair
 Armlehnstuhl_chaise avec accoudoirs



Samba Rio (terra)
 art. 9761 sedia_chair_Stuhl_chaise
 art. 9773 base tavolo_table base_Tischgestell_base table
 art. 9682 piano_top_Tischplatte_plateau (hpl white)



Samba Rio (white)
art. 9762 poltrona lounge_lounge armchair_lounge Sessel_fauteuil lounge
art. 9763 pouf_Hocker



Samba Rio (white)
art. 9763 pouf_Hocker
art. 9764 vassoio_tray_Tablett_plateau



live
here
and
now



Samba Rio (white_terra) (petra panna)
art. 9900A lettino_sun bed_Sonnenliege_bain de soleil
art. 9901 tavolino_side table_Beistelltisch_table basse
(aluminum top)

09/Playa



Una collezione progettata per il contract, dove il design pratico, elegante ed essenziale e la scelta di utilizzare materiali altamente resistenti la rende particolarmente indicata.

A collection created for contract purposes, characterized by a practical elegant minimalistic design and the selection of highly durable materials, making it especially appropriate.

Eine für den Objekt-Bereich gestaltete Kollektion, die sich durch ein praktisches, elegantes und essentielles Design auszeichnet und durch die Verwendung von hochbeständigen Materialien besonders empfehlenswert ist.

Une collection conçue pour l'Ho.Re.Ca. caractérisée par un design pratique, élégant minimaliste et le choix de matériaux très résistants, la rendant particulièrement appropriée.



Playa (white)
art. 9908 recliner
art. 9909 pouf_Hocker

make
your
space beautiful



Playa (white) (azzurro mare)
art. 9905 lettino_sun bed_Sonnenliege_bain de soleil

Technical Data Materials

Tutte le strutture sono realizzate in alluminio e/o acciaio con finitura a polveri a garanzia di leggerezza, durata e resistenza agli agenti atmosferici. Per gli intrecci si utilizzano il Sunweave (fili di polietilene) ed il Sunloom (fili di poliestere rivestiti in PVC); Sunweave e Sunloom sono filamenti testati SGS.

La collezione Portofino ha parti intrecciate con Nautic Rope (corda nautica), una corda in poliestere, robusta e resistente all'acqua ed alla salsedine. Il nuovo Searope, corda in polipropilene di ultima generazione, abbina la bellezza di un tocco naturale ad una forte robustezza, resistenza all'acqua e ai raggi UV.

Sunweave, Sunloom, Nautic Rope e SeaRope sono resistenti al caldo, al freddo, all'acqua salata ed ai raggi UV.

Nelle collezioni Lipari, Key West, Portofino e Samba Rio è previsto l'utilizzo di Batyline (originale Serge Ferrari) e Textilene.

Questi sono tessuti in PVC con piccole forature che permettono areazione e drenaggio dell'acqua. Il batyline ed il textilene sono resistenti al caldo, al freddo e all'acqua salata.

I piani dei tavoli possono essere in vetro laccato o trasparente temperato, alluminio oppure in HPL (high pressure laminate) adatto per esterni.

La manutenzione di tutti i mobili è oltremodo semplice: lavare sia le strutture che le parti intrecciate con acqua fredda e sapone neutro aiutandosi con una spazzola a setole morbide e una spugna. Sciacquare con acqua fredda e far asciugare bene all'aria.

Non usare detergenti aggressivi o prodotti al cloro. Per maggiori dettagli si raccomanda la lettura del cartellino 'manutenzione' che viene fornito alla consegna dei mobili.

La durata dei mobili è subordinata ad un corretto utilizzo e ad una adeguata manutenzione come da noi suggerito. Si declina ogni responsabilità per danni a persone o cose causati da uso improprio ed atti vandalici.

Roberti si riserva la facoltà di apportare modifiche o migliorie senza alcun preavviso.

All structures are in aluminum and/or stainless steel powder coated to ensure lightness, durability and resistance to atmospheric agents.

Sunweave (polyethylene fibres) and Sunloom (polyester fibre coated PVC) are used for weaving some furniture parts. Sunweave and Sunloom are both SGS tested materials.

The Portofino collection has parts woven with Nautic Rope, a robust and water resistant polyester rope.

The new Searope, a rope made of last generation of polypropylene, combines the beauty of a natural touch to a good resistance to water and UV rays.

Sunweave, Sunloom, Nautic Rope and Sea Rope withstand heat, cold, water and sea spray as well as ultraviolet rays.

In the collections Lipari, Key West, Portofino and Samba Rio we use the Batyline (original by Serge Ferrari) and Textilene. Both materials are in PVC with open structure allowing aeration and water drainage. Batyline and Textilene are resistant to the heat, cold and salt water.

Table tops may be either in tempered glass or in aluminum, or in HPL (high pressure laminate) suitable for outdoor use.

The maintenance of all furniture is very easy; just wash it with cold water and neutral soap, using a soft brush and a sponge if necessary, then rinse with cold water and let it air dry.

Do not use aggressive detergents or chlorine. For more detailed instructions please carefully read and follow our care and maintenance' leaflet joined to the furniture on delivery.

The durability of each single furniture piece is subject to proper use; we deny any responsibility for damages caused by improper use or vandalism.

Roberti has the right to modify or upgrade the product without prior notice.

Alle Möbel-Gestelle sind aus Aluminium und/oder Edelstahl pulverbeschichtet die Leichtigkeit, Widerstandsfähigkeit gegen Witterungseinflüsse und Langlebigkeit garantieren. Für die geflochtene Teile werden Sunweave (Polyethilene Faser) und Sunloom (Polyester Faser beschichtet mit PVC) verwendet. Sunweave und Sunloom sind SGS getestet.

Die Kollektion Portofino hat Teile die mit Nautic Rope geflochten sind. Nautic Rope ist ein Seil aus Polyester, fest und gleichzeitig weich.

Das schöne neue SEAROPE, Polypropylenseil, ist ein neuer Vorschlag mit einer natürlichen Note, doch ist robust, Wasser- und UV-Strahlen beständig. Sunweave, Sunloom, Nautic Rope und Searope sind beständig gegen Hitze, und Kälte Wasser und Salzurückstände wie auch gegen UV-Strahlen.

Das Batyline (original Serge Ferrari) und das Textilene werden in den Kollektionen Lipari, Key West, Portofino und Samba Rio verwendet.

Diese Gewebe sind aus PVC und erlauben eine gute Belüftung und lassen das Wasser ablaufen. Batyline und Textilene sind Hitze- und Kälte beständig, aber auch gegen Salzwasser.

Die Tischplatten sind, aus lackiertem und gehärtetem Glas, oder Aluminium, oder aus HPL (High Pressure Laminate) geeignet für den Außenbereich.

Die Langlebigkeit der Möbel ist mit einer ordentlichen Verwendung verbunden; die Pflege ist leicht: einfach die Möbelteile mit Wasser und neutraler Seife reinigen, evtl. mit der Hilfe einer weichen Bürste, dann mit kaltem Wasser abspülen und trocknen lassen. Die Verwendung von aggressiven Reinigungsmitteln und Chlor sind absolut zu vermeiden.

Wir bitten, die auf unseren 'Care and maintenance' Brochüre angegebenen Empfehlungen, aufmerksam zu folgen. Die Brochüre wird mit den Möbel geliefert. Die Langlebigkeit der Möbel ist mit einer ordentlichen Verwendung verbunden. Wir lehnen jegliche Verantwortung für missbräuchliche Verwendung ab.

Roberti behält sich das Recht vor, ohne jegliche Benachrichtigung, Änderungen oder Produktverbesserungen vorzunehmen.

Toutes les structures sont en aluminium et/ou en acier inoxydable traités avec une finition spéciale pour extérieur qui garantie résistance aux agents atmosphériques ainsi que durabilité.

Pour les parties tressées on utilise le Sunweave (fil de polyéthylène) et le Sunloom (fil de polyester avec revêtement en PVC); Sunweave et Sunloom sont testés SGS.

La collection Portofino a le tressage en Nautic Rope, un fil de polyester très robuste et flexible, avec une forte résistance aux intempéries.

Le nouveau tressage SEAROPE, une corde en polypropylène de nouvelle génération conjugue la beauté d'une touche naturelle et une très bonne résistance à l'eau et aux rayons UV.

Sunweave, Sunloom, Nautic Rope et Searope sont résistantes à la chaleur et au froid, à l'eau et à la salure ainsi que aux rayons UV.

Dans les collections Lipari, Key West, Portofino et Samba Rio on utilise Batyline (originale by Serge Ferrari) et Textilene.

Ces tissus en pvc sont ajourés, permettant l'aération et le drainage de l'eau. Batyline et Textilene sont résistants à la chaleur, au froid et à l'eau de mer.

Les dessus des tables sont disponibles, en verre lacqué et trempé ou en aluminium, ou en HPL (High Pressure Laminate) adapté pour l'extérieur.

La durée des meubles est liée à une utilisation correcte. L'entretien est très simple: il faut laver les meubles avec de l'eau froide et savon neutre en utilisant une brosse souple.

Après rincer et faire essuyer à l'air. Il faut absolument éviter l'utilisation de détergents agressifs ou du chlore. Nous conseillons de lire et suivre les instructions indiqués dans la brochure 'care and maintenance' que nous attachons aux meubles au moment de la livraison.

La durée des meubles est donc en rapport à un usage et un soin correct: nous déclinons toute responsabilité pour des dégats provoqués par une mauvaise utilisation ou actes de vandalisme.

Roberti se réserve la faculté d'apporter des modifications ou améliorations aux produits sans aucun préavis.

materials

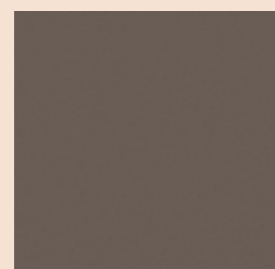
Finiture

finishes_Färbungen_finitions



White

Capri_Lipari_
Hamptons Graphics_
Playa_Samba Rio
Collections



Terra

Playa_Portofino_
Samba Rio Collections



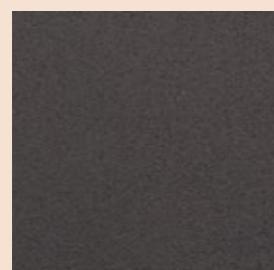
Coffee

Hamptons Graphics
Collection



Champagne

Gravity Collection

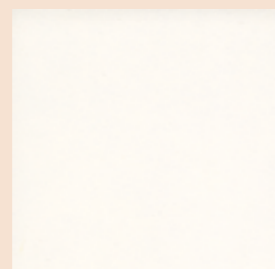


Graphite

Capri_Lipari_Gravity
Samba Rio Collections

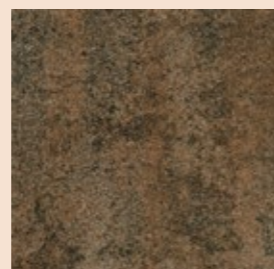
Piani in hpl

hpl tops_Hpl-Platten_plateaux en hpl



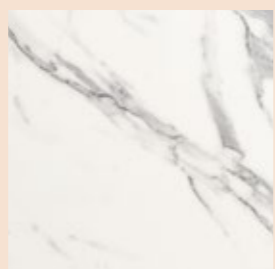
Hpl White

Hamptons Graphics_
Samba Rio Collections



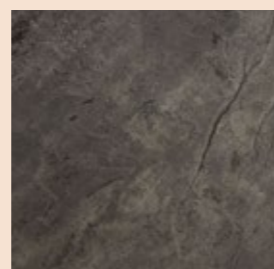
Hpl Corten

Hamptons Graphics_
Portofino_Samba Rio
Collections



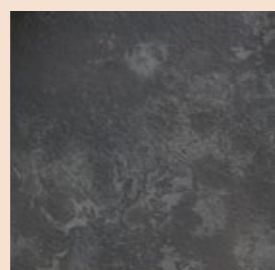
Hpl Marble White

Capri_Lipari_
Samba Rio Collections



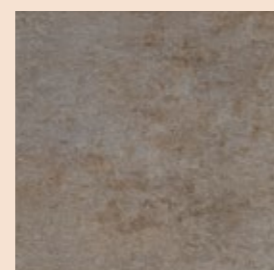
Hpl Slate Stone

Capri (excluded top 130-150)
Lipari_Samba Rio
Collections



Hpl Light Slate

Capri collection
only for top ø130/150 cm



Hpl Stone Grey

Key West_
Samba Rio Collections



Hpl Stone White

Key West_
Samba Rio Collections

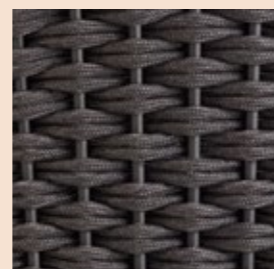
Corde

ropes_Seile_cordes



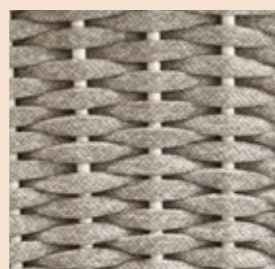
Round Searope Pearl

Capri Collection
100% PP
Imo tested



Round Searope Dark Grey

Capri Collection
100% PP
Imo tested



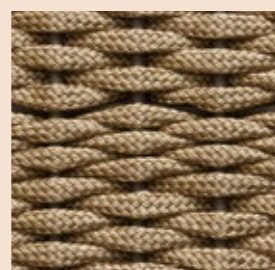
Oval Searope Pearl

Lipari Collection
100% PP
Imo tested



Oval Searope Silver

Lipari Collection
100% PP
Imo tested



Nautic Rope Sand

Portofino Collection
100% polyester



Nautic Rope Sand

Gravity collection
100% polyester



Nautic Rope Black

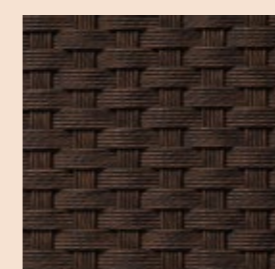
Gravity collection
100% polyester

Intrecci

weaving_Geflechte_tressage

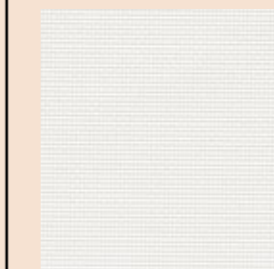


Sunweave Bianco Perla
Hamptons Collection
polyethylene



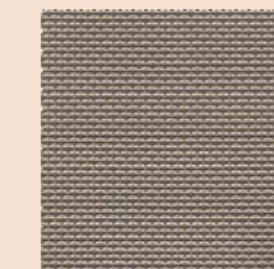
Sunloom Chocolate
Caribe Collection
polyester-pvc

Batyline



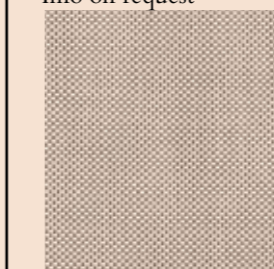
Batyline Bianco

Playa_Samba Rio (only
sunbed_chairs) Coll.
polyester-pvc
Imo on request



Batyline Terra

Playa_Portofino_Samba Rio
(only sunbed_chairs) Coll.
polyester-pvc
Imo on request



Batyline Walnut

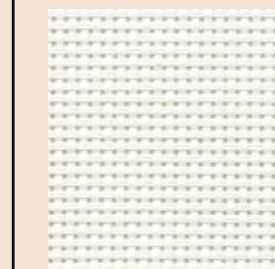
Lipari Collection
polyester-pvc
Imo tested



Batyline Pepper

Lipari Collection
polyester-pvc
Imo tested

Textilene



Textilene White

Samba Rio Collection
(only lounge armchair
and pouf)
polyester-pvc



Textilene Terra

Samba Rio Collection
(only lounge armchair
and pouf)
polyester-pvc

• Finitura disponibile solo in alcuni articoli della collezione, come indicato a pag. 150
finish only available for some articles of collection, as indicated on page 150
Ausführung nur für einige Artikel der Kollektion verfügbar, wie auf Seite 150
angegeben
Finition disponible uniquement pour certains articles de la collection, comme
indiqué à la page 150

Fabrics & Covers

TESSUTI

Roberti propone una vasta gamma di tessuti adatti all'uso esterno con caratteristiche diverse. Tutti hanno un'alta resistenza ai raggi UV. Sono compresi in 3 categorie di prezzo.

GRUPPO A1 offre una vasta gamma di tessuti adatti ad uso esterno, acrilici (Sunbrella) ed in polipropilene abbinati a imbottiture in poliuretano espanso con uno speciale rivestimento in tela poliestere idrorepellente. I cuscini morbidi degli schienali ed i piccoli cuscini decorativi contengono un mix di chips di poliestere racchiusi in una federa in poliestere - pvc idrorepellente. E' questa la proposta ideale per un cuscino per esterno ove si unisce il comfort di un tessuto alla garanzia di protezione dell'imbottitura.

GRUPPO B1 I tessuti della categoria B1 sono composti da pvc, poliestere e poliuretano; sono tessuti idrorepellenti. I tessuti B1 abbinati alle imbottiture in poliuretano espanso con speciale rivestimento in tela di poliestere - pvc offrono quindi una quasi totale impermeabilità all'acqua. Vi possono essere piccole infiltrazioni di acqua attraverso le cuciture e quindi per garantire una veloce asciugatura all'interno si raccomanda di aprire le cerniere ed arieggiare l'interno del cuscino regolarmente. I tessuti del Gruppo B1 sono disponibili solo per alcuni modelli della collezione come specificato nel listino prezzi.

GRUPPO C1 I tessuti della categoria C1 sono composti da pvc, poliestere e poliuretano; hanno una leggera imbottitura in poliestere fissata con termosaldatura a righe orizzontali e sono idrorepellenti. I tessuti C1 abbinati alle imbottiture in poliuretano espanso con speciale rivestimento in tela di poliestere - pvc offrono quindi una quasi totale impermeabilità all'acqua. Vi possono essere piccole infiltrazioni di acqua attraverso le cuciture e quindi per garantire una veloce asciugatura all'interno si raccomanda di aprire le cerniere ed arieggiare l'interno del cuscino regolarmente. I tessuti del Gruppo C1 sono disponibili solo per alcuni modelli della collezione come specificato nel listino prezzi.

I tessuti della categoria A1 possono essere lavati a mano, in acqua fredda (max. 30°C) ed asciugati all'aria. Stiratura a bassissima temperatura. I tessuti delle categorie B1 e C1 devono essere periodicamente puliti con un panno umido e leggero detergente neutro.

Devono essere regolarmente asciugati all'interno aprendo la cerniera e permettendo l'aerazione al fine di evitare il formarsi di muffe. Eventuali macchie devono essere pulite prontamente per evitare che si stabilizzino. Si raccomanda di seguire scrupolosamente le istruzioni di lavaggio e manutenzione indicate nel cartellino qualità "Cura e Manutenzione" fornito con i mobili. Tutti i cuscini sono realizzati esclusivamente in Italia con utilizzo di imbottiture di origine italiana.

COVERS

Per una migliore protezione dei mobili consigliamo l'uso delle nostre coperture in uno speciale tessuto impermeabile (pvc + poliestere). Le coperture proteggono dalle intemperie e dal depositarsi di polveri e impurità atmosferiche. Le coperture sono disponibili per una parte dei modelli come indicato in listino.

FABRICS

Roberti offers a wide choice of fabrics suitable for outdoor use and with peculiar features. All the fabric are UV resistant and have 3 price levels.

***GROUP A1** offers a wide choice of fabrics for outdoor use, some of them acryl fabric from Sunbrella, some others polypropilene fabrics, all combined with a polyurethane padding protected by a polyester cover, water repellent. The soft back pillows and the decorative pillows contain a mix of polyester chips inside a polyester, water repellent, cover. This is the ideal proposal for cushions you can leave outside, combining the comfort of a fabric with the full protection of the padding.*

***GROUP B1** the fabrics B1 - composed of pvc, polyester and polyurethane - are water repellent. The B1 fabrics combined with padding polyurethane foams completely protected by a polyester cover offer the best waterproof solution. It can happen that some water enters through the stitches; we therefore suggest to regularly open the fabric cover zipper to permit ventilation to the inside part of the cushion. Fabrics B1 are available only for part of the collection, as specified in the pricelist.*

***GROUP C1** the fabrics C1 - composed of pvc-polyester and polyurethane - have a light polyester padding fixed by a thermowelding with horizontal stripes and are water repellent. The C1 fabrics combined with padding polyurethane foams completely protected by a polyester cover offer the best waterproof solution. It can happen that some water enters through the stitches; we therefore suggest to regularly open the fabric cover zipper to permit ventilation to the inside part of the cushion. Fabrics C1 are available only for part of the collection, as specified in the pricelist.*

All fabrics A1 can be hand washed on cold water (max. 30°C) and air dried. Ironing only at very low temperature.

Fabrics B1 and C1 must be regularly cleaned with a wet cloth and a mild detergent, but not soaked. It is also recommendable to open zippers of fabric covers regularly in order to permit ventilation inside the cushion to avoid mold stains. Stains should be immediately removed to prevent they leave an imprint. It is highly recommendable to read and carefully follow all suggestions given in the 'care and maintenance' leaflet delivered with the furniture. All cushions are entirely MADE IN ITALY using paddings of italian origin.

COVERS

For an additional protection of the furniture we suggest our special covers, water repellent, made of pvc and polyester. The covers protect from weathering as well as from dust and atmospheric impurities.

The covers are available for part of the models as indicated in the pricelist.

STOFFE

Roberti bietet eine breite Auswahl an Stoffen für den Außenbereich mit unterschiedliche Eigenschaften. Alle Stoffe haben eine starke Beständigkeit gegen UV-Strahlen. Es gibt 3 verschiedene Preiskategorien.

GRUPPE A1 Breite Auswahl an Stoffen die für den Außenbereich geeignet sind: Acryl-Stoffe von Sunbrella und neue Polypropilene-Stoffe. Die Kissen haben Polyurethanschaum überzogen mit einem Polyestergewebe, wasserdicht. Die weichen Rückenissen und die kleine Wurfkissen enthalten ein Mix aus Polyester-Chips und sind durch einer Polyester Hülle, wasserabstoßend, geschützt. Diese Kombination Stoff+geschützte Kissenfüllung ist die beste Lösung für den Außenbereich und bietet den richtigen Komfort sowie eine lange Haltbarkeit des Kissens.

GRUPPE B1 Die Stoffe der Kat. B1 sind aus PVC, Polyester und Polyurethan und wirken wasserabstoßend. Der Schaumstoff ist aus Polyurethan überzogen mit einem Polyestergewebe, wasserdicht. Sollte etwas Wasser eindringen durch die Naht, empfehlen wir die Kissen abtrocknen zu lassen: einfach den Reißverschluss öffnen und das Kissen-Kern belüften und abtrocknen. Die B1 Stoffe sind nur für einige Modelle verwendbar, die auf der Preisliste angegeben sind.

GRUPPE C1 Die Stoffe der Kat. C1 sind aus PVC, Polyester und Polyurethan und haben einen leichten Polyester-Schaum der mit einer waagerechten Heißversiegelung befestigt ist. Der Schaumstoff ist aus Polyurethan überzogen mit einem Polyestergewebe, wasserdicht. Sollte etwas Wasser eindringen durch die Naht, empfehlen wir die Kissen abtrocknen zu lassen: einfach den Reißverschluss öffnen und das Kissen-Kern belüften und abtrocknen. Die C1 Stoffe sind nur für einige Modelle verwendbar, die auf der Preisliste angegeben sind.

Die Stoffe der Kat. A1 sind Hand waschbar (kaltes Wasser max. 30°C) und müssen an die Luft trocknen. Bügeln nur mit sehr niedriger Temperatur. Die Stoffe der Kat. B1 und C1 müssen regelmäßig mit einem feuchtem Lappen und neutraler Seife gereinigt werden. Um Schimmel-Bildungen zu vermeiden, empfehlen wir ein regelmäßiger Kissen-Abtrocknen. Stoff-Hülle öffnen und das Innenleben des Kissens belüften und abtrocknen. Ev. Flecken müssen sofort entfernt werden. Wir bitten die Pflegehinweise auf unseren Qualitäts-Schild (geliefert mit der Möbel) genau zu beachten. Alle Kissen sind ausschließlich in Italien hergestellt mit italienischem Schaumstoff.

COVERS

Für einen besseren Schutz der Möbel, bieten wir wasserdichte Schutzhüllen aus Pvc und Polyester. Dadurch werden die Möbel vom Unwetter sowie auch vom atmosphärischen Unreinheiten bewahrt. Die Schutzhüllen sind nur für sämtliche Modellen - wie in der Preisliste angegeben - erhältlich.

TISSUS

Roberti offre una large gamme de tissus conseillés pour l'extérieur avec des caractéristiques différentes. Tous les tissus sont résistants aux rayons UV et sont représentés en 3 catégories de prix.

***GROUPE A1** offre une large gamme de tissus pour l'extérieur avec des rembourrages des coussins en polyurethane revêtus avec un tissu en polyester imperméable. Une partie des tissus est en acryl (Sunbrella) et une partie en polypropilene. Le rembourrage des coussins souples des dos et les petits coussins décoratifs sont en chips de polyester enfermés dans une housse en polyester imperméable à l'eau. Cela est la proposition idéale pour des coussins pour l'extérieur tout en assurant le confort des tissus et la résistance à l'eau des rembourrages.*

***GROUPE B1** Les tissus B1 sont en PVC, Polyester et Polyurethane; ils sont des tissus hydrofuges. Les mousses de rembourrages sont toujours enfermées dans les revêtements en polyester ainsi le coussins est presque complètement imperméable. Il peut y avoir un passage d'eau très léger à travers les coutures. Nous conseillons donc de ouvrir les fermetures éclair et faire sécher la partie intérieure du coussin avec régularité. Ça évitera la formation de moisissure à l'intérieur. Les tissus B1 sont disponibles uniquement pour certains modèles de la collection, comme spécifié dans la liste des prix.*

***GROUPE C1** Les Tissus C1 sont en PVC, Polyester et Polyurethane; ils ont un rembourrage léger en polyester fixé par thermoscellage à bandes horizontales. Il sont des tissus imperméables à l'eau. Les mousses de rembourrages sont toujours enfermées dans les revêtements en polyester ainsi le coussins est presque complètement imperméable. Il peut y avoir un passage d'eau très léger à travers les coutures. Nous conseillons donc de ouvrir les fermetures éclair et faire sécher la partie intérieure du coussin avec régularité. Ça évitera la formation de moisissure à l'intérieur. Les tissus C1 sont disponibles uniquement pour certains modèles de la collection, comme spécifié dans la liste des prix.*

Tous les tissus A1 peuvent être lavés à la main avec eau froide (max. 30°C) et doivent sécher à l'air. Tous les tissus B1 et C1 peuvent être nettoyés en utilisant un chiffon souple et une solution nettoyante douce, sans les laver. S'il y a des taches il faut les enlever au plus vite avant qu'elles se fixent.

Nous conseillons de faire sécher tous les coussins avec régularité en ouvrant la fermeture éclair des housses et permettant la ventilation. Toutes les instructions pour l'entretien et nettoyage indiquées dans la fiche qualité " Care and Maintenance" fournie avec les meubles sont à suivre avec attention. Tous les coussins sont réalisés exclusivement en Italie en utilisant des matériaux de rembourrage 'made in Italy'.

COVERS

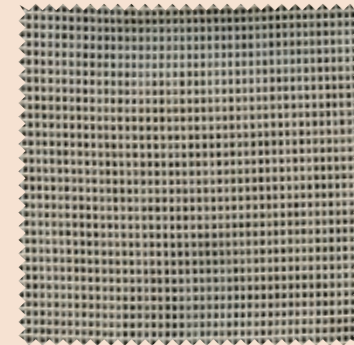
Pour une meilleure protection des meubles nous conseillons des housses en tissu pvc et polyester imperméables. Les housses protègent des intempéries ainsi que des poussières et impuretés atmosphériques. Elles sont disponibles pour une partie des modèles comme indiqué dans la liste des prix.

fabrics & covers

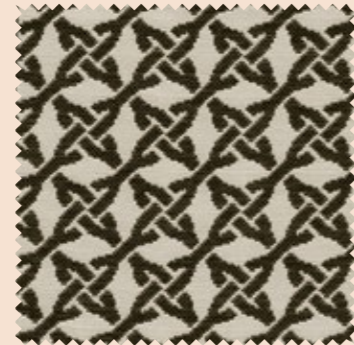
POLYPROPYLENE (PP)_POLYESTHER (PL)



Petra panna
100% PP
martindale 45.000
cat. A1
Imo tested



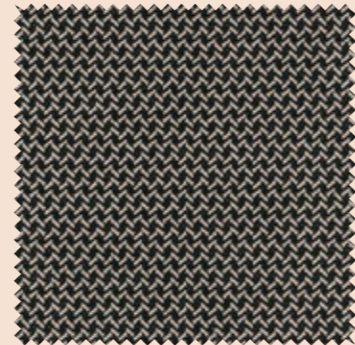
Tricot nero
55% PP 45% PL
martindale 25.000
cat. A1
Imo tested



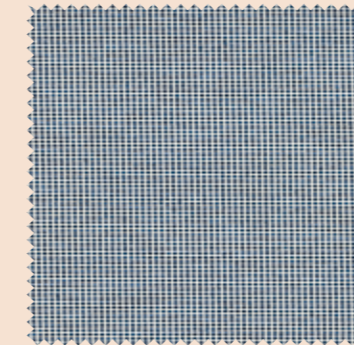
Kristal nero
63% PP 37% PL
martindale 18.000
cat. A1
Imo tested



Righe beige
52% PL 48% PP
martindale 18.000
cat. A1
Imo tested



Arabesque
100% PP
martindale 40.000
cat. A1
Imo tested



Tricot blu
55% PL 45% PP
martindale 25.000
cat. A1
Imo tested



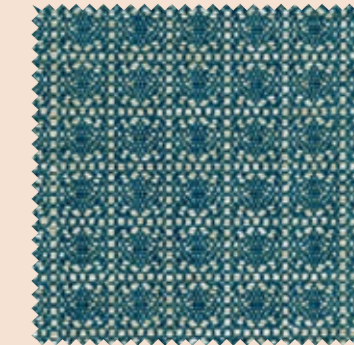
Kristal blu
63% PP 37% PL
martindale 18.000
cat. A1
Imo tested



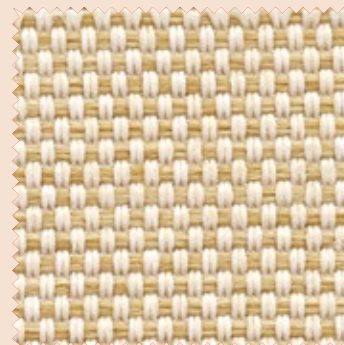
Mosaic blu
100% PP
martindale 50.000
cat. A1
Imo tested



Oceano
100% PP
martindale 40.000
cat. A1



Emerald
100% PP
martindale 40.000
cat. A1



Mosaic oromix
100% PP
martindale 50.000
cat. A1
Imo tested



Kristal oromix
63% PP 37% PL
martindale 18.000
cat. A1
Imo tested



Petra sabbia
100% PP
martindale 45.000
cat. A1
Imo tested



Dune beige
100% PP
martindale 40.000
cat. A1



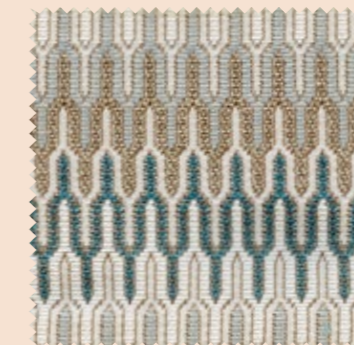
Iride beige
100% PP
martindale 45.000
cat. A1



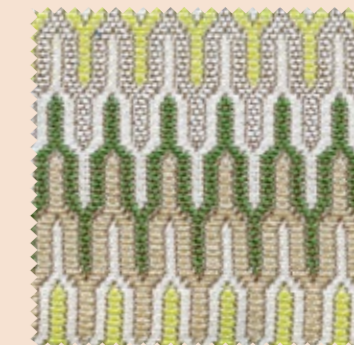
Azzurro mare
55% PP 45% PL
martindale 20.000
cat. A1
Imo tested



Righe azzurro
55% PP 45% PL
martindale 20.000
cat. A1
Imo tested



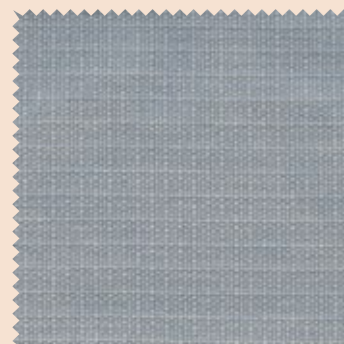
Orient azzurro
60% PP 40% PL
martindale 20.000
cat. A1



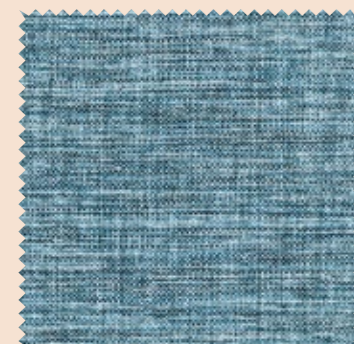
Orient verde
60% PP 40% PL
martindale 20.000
cat. A1



Trama bianca
100% PP
martindale 35.000
cat. A1



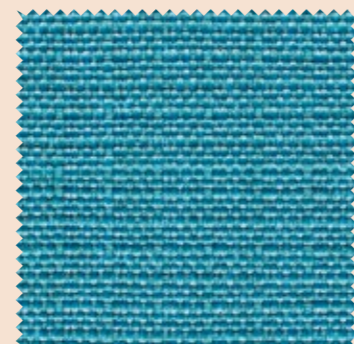
Azzurro polvere
100% PP
martindale 45.000
cat. A1
Imo tested



Iride turchese
100% PP
martindale 40.000
cat. A1



Dune turchesi
100% PP
martindale 40.000
cat. A1



Petra azzurro
100% PP
martindale 45.000
cat. A1
Imo tested



Onde azzurro
60% PP 40% PL
martindale 20.000
cat. A1
Imo tested



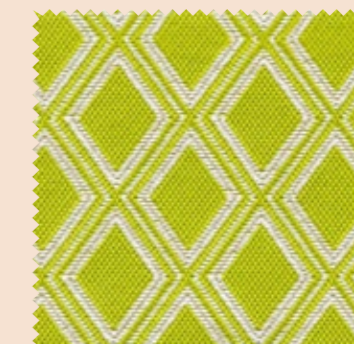
Tricot ocra
55% PP 45% PL
martindale 25.000
cat. A1
Imo tested



Kristal ocra
63% PP 37% PL
martindale 18.000
cat. A1
Imo tested



Mosaic ocra
100% PP
martindale 50.000
cat. A1
Imo tested



Rombi verdi
100% PP
martindale 25.000
cat. A1



Pistacchio
100% PP
martindale 35.000
cat. A1

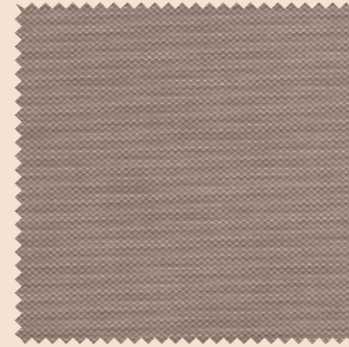
POLYPROPYLENE (PP) - PVC



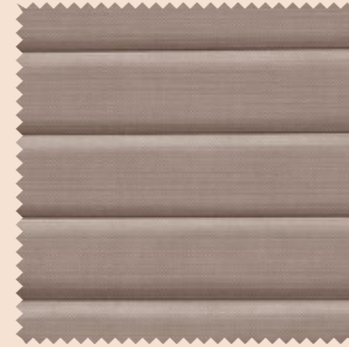
Nautic white
87% PVC 12% PL 1% PU
martindale 300.000
cat. B1



Nautic stripe white
87% PVC 12% PL 1% PU
martindale 300.000
cat. C1



Nautic taupe
87% PVC 12% PL 1% PU
martindale 300.000
cat. B1



Nautic stripe taupe
87% PVC 12% PL 1% PU
martindale 300.000
cat. C1

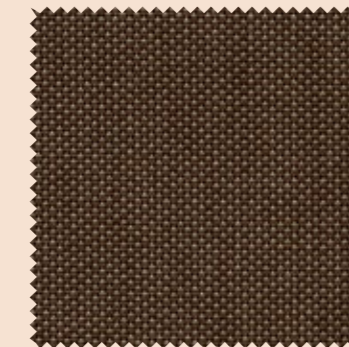
ACRILIC (PC)



Bianco
100% PC
martindale 20.000
cat. A1



Noce
100% PC
martindale 20.000
cat. A1



Brownies
100% PC
martindale 15.000
cat. A1

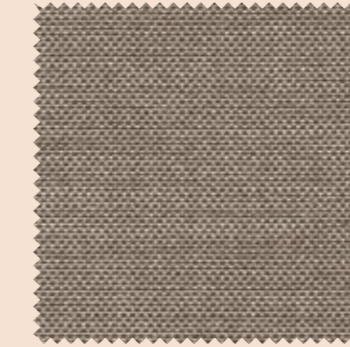
ACRILIC (PC)



Natte bianco
100% PC
martindale 16.000
cat. A1



Natte erica
100% PC
martindale 16.000
cat. A1



Natte fumo
100% PC
martindale 19.000
cat. A1



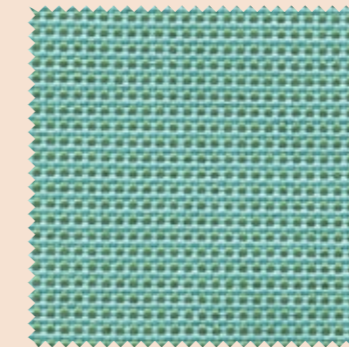
Natte grigio
100% PC
martindale 19.000
cat. A1



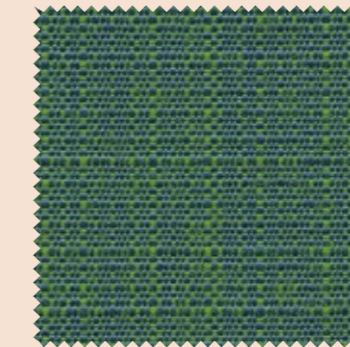
Natte azzurro
100% PC
martindale 17.000
cat. A1



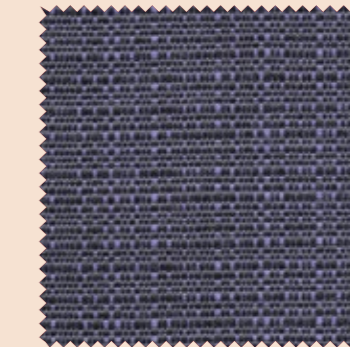
Tortora
100% PC
martindale 15.000
cat. A1



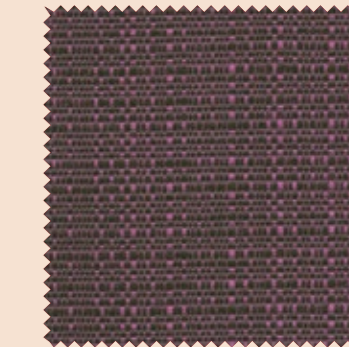
Giada *
100% PC
martindale 20.000
cat. A1



Smeraldo *
100% PC
martindale 20.000
cat. A1



Melanzana *
100% PC
martindale 20.000
cat. A1



Rubino *
100% PC
martindale 20.000
cat. A1



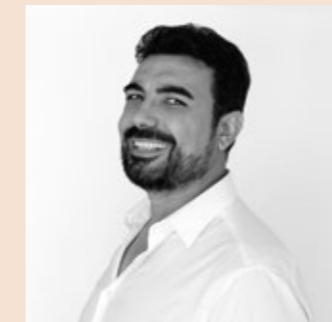
Cover
pvc-pl



I tessuti contrassegnati con questo simbolo, sono di fine serie e s'intendono disponibili solo fino ad esaurimento scorte.
The fabrics with this symbol are out of production and only available until stocks last.
Die gekennzeichneten Stoffe sind auslaufend und können nur solange der Lagervorrat reicht, geliefert werden.
Les tissus avec ce symbole sont hors production et encore disponibles jusqu'à épuisement des stocks.

Drawings

Capri / Santiago Sevillano



Nato a Valencia nel 1975.
Santiago Sevillano ha studiato design industriale all'ESDI CEU, poi si è specializzato al Politecnico di Valencia e alla Scuola di Architettura.
Nel 2003 ha fondato il suo studio a Valencia.

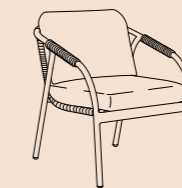
*Born in Valencia in 1975.
Santiago Sevillano is a young designer who studied industrial design at the ESDI CEU, later specializing at the Polytechnic University in Valencia and at the School of Architecture. In 2003 he founded his studio in Valencia.*



art. 4301
cm 58x61x79h
(Hs. cm 45+2)



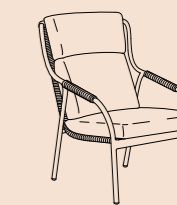
art. 4325
cm ø 130x74h
only hpl light slate



art. 4311
cm 69x78x75h
(Hs. cm 37+10)



art. 4318H
cm ø 58x36h
only slate stone



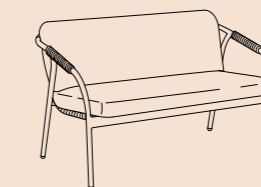
art. 4315
cm 71x92x106h
(Hs. cm 37+10)



art. 4305
cm 49x48x90h
(Hs. cm 74)



art. 4326
cm ø 150x74h
only hpl light slate



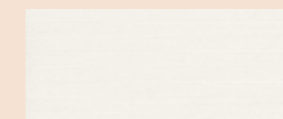
art. 4312
cm 138x78x75h
(Hs. cm 37+10)



art. 4319H
cm ø 78x45h
only slate stone



art. 4316
cm 62x58x37h
(Hs. cm 37+8)



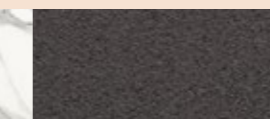
white



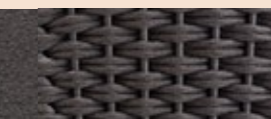
round searope
pearl



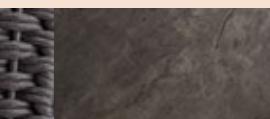
hpl marble white



graphite



round searope
dark grey

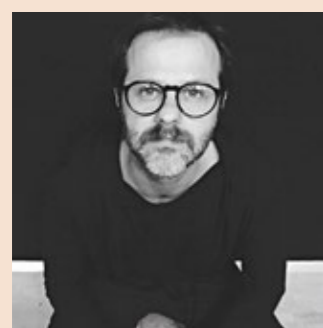


hpl slate stone



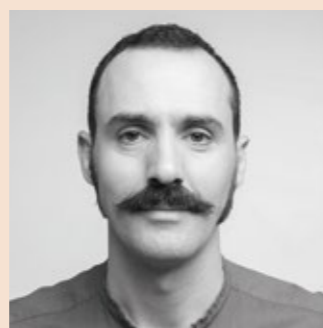
hpl light slate

* Gli articoli contrassegnati con questo simbolo, sono di fine serie e s'intendono disponibili solo fino ad esaurimento scorte.
The articles marked with this symbol are out of production and only available until stocks last.
Die auslaufende Modelle sind nicht mehr in Produktion und können nur solange der Lagervorrat reicht, geliefert werden.
Les articles avec ce symbole sont hors production et encore disponibles jusqu'à épuisement des stocks.



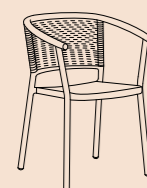
Nato a Varazze in Liguria, nel 2007 consegue la Laurea in Design del Prodotto presso il Politecnico di Milano, perfeziona la sua formazione seguendo, presso la stessa istituzione, il corso di alta formazione in Design del Prodotto in Plastica. Parallelamente all'attività di progettazione, dal 2011 è Cultore della Materia presso la Facoltà del Design del Politecnico di Milano.

Born in Varazze - Liguria, in 2007 he graduated in Product Design at the Milan Polytechnic, his educational background pursuing a course - in the same institution - of advanced training in Design of the plastic product. Alongside the design activities, since 2011 he is Cultore della Materia at the Design Faculty of the Milan Polytechnic.

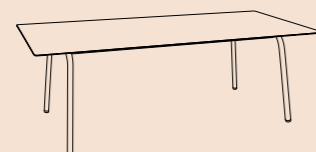


Studia al Politecnico di Milano, alla Royal Danish Academy di Copenhagen e consegue un master all'Istituto Marangoni di Milano. Oltre all'attività di progettazione insegna nel master di Design Methodology della NABA di Milano e Scuola Politecnica di Design.

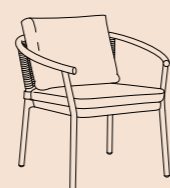
He studied at the Politecnico di Milano, at the Royal Danish Academy in Copenhagen and holds a master at the Marangoni Institute in Milan. Alongside the design activity he teaches in the Design Methodology Master of Milan's NABA and Design Polytechnic School.



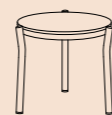
art. 4331
cm 60x54x81h
(Hs. cm 46+2) *



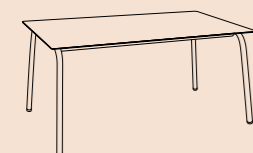
art. 9777
cm 110x260x74h
Lab Roberti *



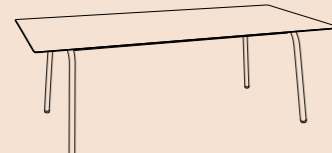
art. 4341
cm 74x70x71h
(Hs. cm 40+6) *



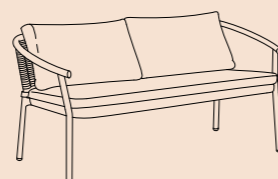
art. 4348H
cm ø 51x41h *



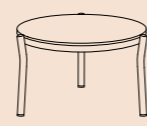
art. 9775
cm 100x180x74h
Lab Roberti *



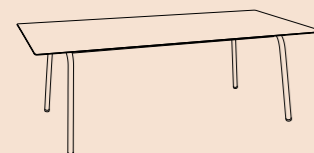
art. 9778
cm 110x300x74h
Lab Roberti *



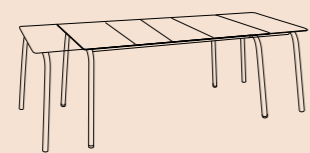
art. 4342
cm 150x75x71h
(Hs. cm 40+6) *



art. 4349H
cm ø 66x36h *



art. 9776
cm 110x220x74h
Lab Roberti *



art. 9779
cm 100x180/230x74h
Lab Roberti *



white

oval searope pearl

hpl marble white

graphite

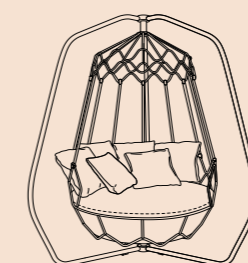
oval searope silver

hpl slate stone



Technical Emotions è stata fondata nel 2010 dalle sorelle Alos Palop: Maria de les Neus, laureata in architettura presso l'Università Politecnica di Valencia, e Laia laureata in design industriale presso l'ESDI CEU.

Technical Emotions was founded in 2010 by Alos Palop sisters: Maria de les Neus, graduated in Architecture at the Valencia University and Laia graduated in industrial design at ESDI CEU.



art. 9880
cm 174x167x238h
(Hs. cm 60) RCD



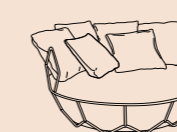
art. 9885
cm ø 80x42h



art. 9881
cm ø 133x238h
(Hs. cm 60) RCD



art. 9886
cm ø 80x42h



art. 9882
cm ø 133x87h
(Hs. cm 40) RCD



Registered Community Design
Modello Comunitario Registrato
Gravity Collections

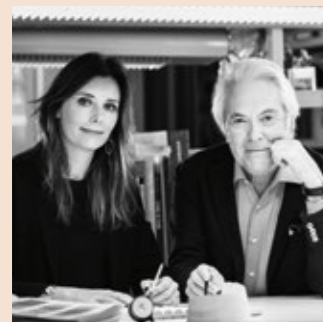


champagne

nautic rope sand

graphite

nautic rope black



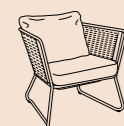
Un atelier in continuo fermento, a metà strada tra un laboratorio creativo ed un'officina di produzione. Fondato da Adriano Balutto si è arricchito della presenza della figlia, l'arch. Veronica Balutto, laureata all'Istituto Universitario di Architettura di Venezia (IUAV). Dal 2006 e' anche giornalista pubblicitaria.

Naturally born for creativity and planning, Studio Balutto has always been in movement to research new innovative ideas to be up to the expectations of the market trends and requests. Founded by Adriano Balutto, in the last years the atelier has had the creativity support of his daughter arch. Veronica Balutto, graduated at the University Institute of Architecture in Venice. Since 2006 she is also a journalist.

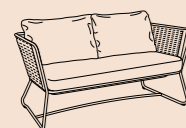


Nato a Valencia nel 1975. Santiago Sevillano ha studiato design industriale all'ESDI CEU, poi si è specializzato al Politecnico di Valencia e alla Scuola di Architettura. Nel 2003 ha fondato il suo studio a Valencia.

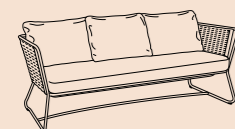
Born in Valencia in 1975. Santiago Sevillano is a young designer who studied industrial design at the ESDI CEU, later specializing at the Polytechnic University in Valencia and at the School of Architecture. In 2003 he founded his studio in Valencia.



art. 9741
cm 75x75x83h
(Hs. cm 35+10)



art. 9742
cm 152x75x83h
(Hs. cm 35+10)



art. 9743
cm 207x75x83h
(Hs. cm 35+10)



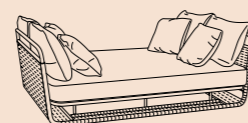
art. 9745
cm 71x71x36h



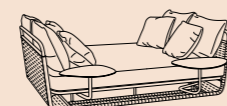
art. 9746
cm 120x71x36h



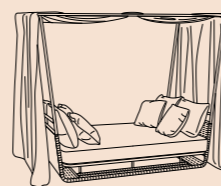
art. 9770
cm 68x60x45h



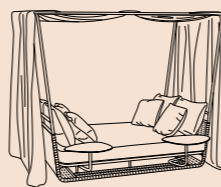
art. 9765
cm 207x153x85h
(in. 186x153)
(Hs. cm 26+15)



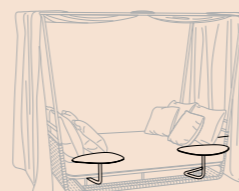
art. 9766



art. 9767
cm 230x153x200h
(in. 186x153)
(Hs. cm 26+15)



art. 9768



art. 9769 / D
art. 9769 / S
cm 48,5x32x26h



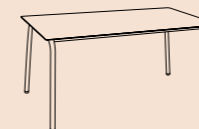
art. 9740
cm 55x57x85h
(Hs. cm 45+2)



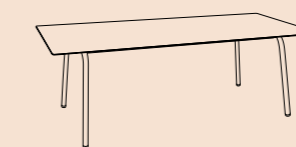
art. 9740 / B
cm 61x57x85h
(Hs. cm 45+2)



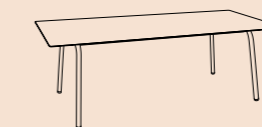
art. 9771
cm 50x53x94,5h
(Hs. cm 75)



art. 9775
cm 100x180x74h
Lab Roberti

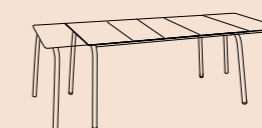


art. 9776
cm 110x220x74h
Lab Roberti

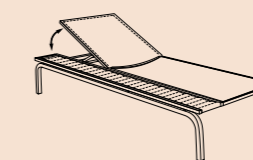


art. 9777
cm 110x260x74h
R&D Roberti

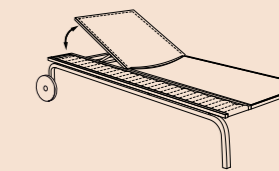
art. 9778
cm 110x300x74h
Lab Roberti



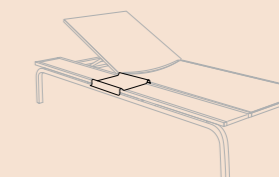
art. 9779
cm 100x180/230x74h
Lab Roberti



art. 9749
cm 90x205x35h
(Hs. cm 35+5)
Lab Roberti



art. 9749R
cm 97x213x35h
(Hs. cm 35+5)
Lab Roberti



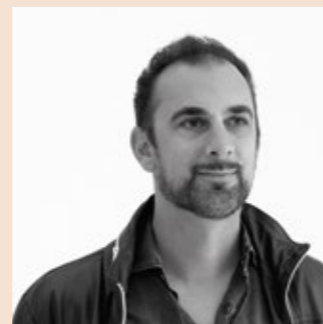
art. 9748
cm 32x25x4h
Lab Roberti

Hamptons Graphics / G.V. Plazzogna R. Papparotto



Gianvittorio Plazzogna nato a Treviso, si laurea in architettura a Venezia. Inizialmente art director presso lo studio Quadragono, apre a Treviso il proprio studio professionale occupandosi di grafica pubblicitaria e di product design. Lo studio si occupa del design e dell'immagine coordinata di diverse aziende operanti nel settore del mobile.

Gianvittorio Plazzogna was born in Treviso and got a degree in Architecture in Venice. He is processing product design collaborating with many companies in the furniture field and also developping complete shops equipment and interior decoration.



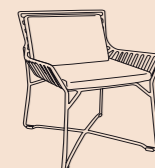
Roberto Papparotto nasce a Treviso nel 1976, frequenta lo IUAV, Istituto Universitario di Architettura di Venezia dove si laurea a pieni voti in Disegno Industriale. Dal 2003 collabora con l'architetto Gianvittorio Plazzogna a progetti di design e art-direction per numerose aziende.

Roberto Papparotto was born in Treviso in 1976, attended IUAV (Architecture University Institute) in Venice getting a degree with full marks in Industrial Design.

Since 2003 he has been collaborating with Arch. Gianvittorio Plazzogna regarding design projects and art-direction of Companies



art. 9750
cm 56x60x80h
(Hs. cm 44+3)



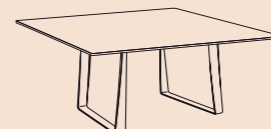
art. 9751
cm 56x60x80h
(Hs. cm 44+3)



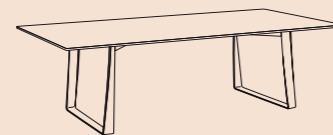
art. 9725
glazed glass top
cm 110x220x73h



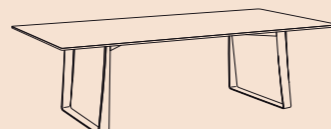
art. 9726
glazed glass top
cm 110x260x73h



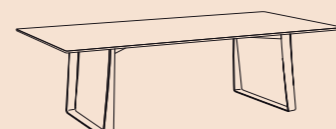
art. 9730
HPL top
cm 160x160x74h



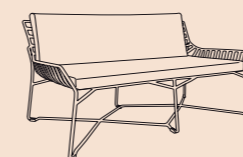
art. 9727
HPL top
cm 110x220x74h



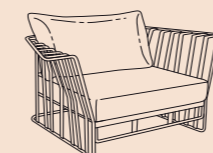
art. 9728
HPL top
cm 110x260x74h



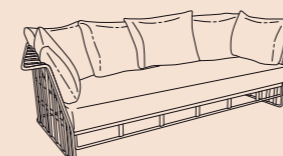
art. 9729
HPL top
cm 110x300x74h



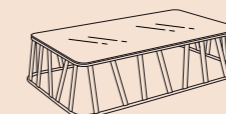
art. 9734
cm 135x77x73h
(Hs. cm 36+6)



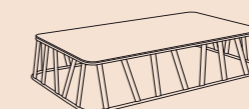
art. 9731
cm 122x93x78h
(Hs. cm 25+15)



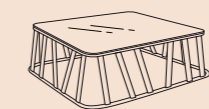
art. 9732
cm 240x100x78h
(Hs. cm 25+15)



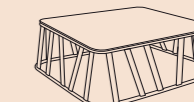
art. 9736
glass top
cm 130x81x30h



art. 9736H
HPL top
cm 130x81x30h



art. 9735
glass top
cm 81x81x30h



art. 9735H
HPL top
cm 81x81x30h



art. 9739H
HPL top
cm 50x50x30h



white

hpl white

coffee

hpl corten

* Gli articoli contrassegnati con questo simbolo, sono di fine serie e s'intendono disponibili solo fino ad esaurimento scorte.
The articles marked with this symbol are out of production and only available until stocks last.
Die auslaufende Modelle sind nicht mehr in Produktion und können nur solange der Lagerbestand reicht, geliefert werden.
Les articles avec ce symbole sont hors production et encore disponibles jusqu'à épuisement des stocks.



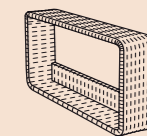
Gianvittorio Plazzogna nato a Treviso, si laurea in architettura a Venezia. Inizialmente art director presso lo studio Quadrangolo, apre a Treviso il proprio studio professionale occupandosi di grafica pubblicitaria e di product design. Lo studio si occupa del design e dell'immagine coordinata di diverse aziende operanti nel settore del mobile.

Gianvittorio Plazzogna was born in Treviso and got a degree in Architecture in Venice. He is processing product design collaborating with many companies in the furniture field and also developing complete shops equipment and interior decoration.

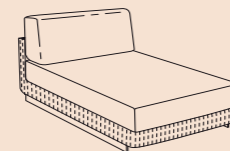


Roberto Papparotto nasce a Treviso nel 1976, frequenta lo IUAV, Istituto Universitario di Architettura di Venezia dove si laurea a pieni voti in Disegno Industriale. Dal 2003 collabora con l'architetto Gianvittorio Plazzogna a progetti di design e art-direction per numerose aziende.

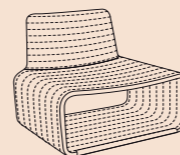
Roberto Papparotto was born in Treviso in 1976, attended IUAV (Architecture University Institute) in Venice getting a degree with full marks in Industrial Design. Since 2003 he has been collaborating with Arch. Gianvittorio Plazzogna regarding design projects and art-direction of Companies



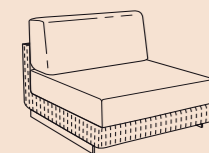
art. 9600
cm 18x100x50h



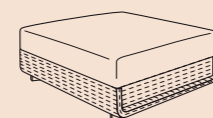
art. 9603
cm 86x175x78h
(Hs. cm 19+19)



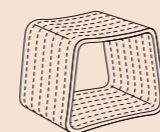
art. 9625
cm 80x76x78h
(Hs. cm 41+2,5)



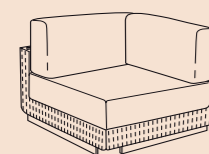
art. 9601
cm 75x102x78h
(Hs. cm 19+19)



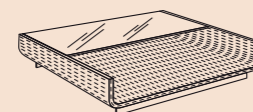
art. 9608
cm 86x86x38h
(Hs. cm 19+19)



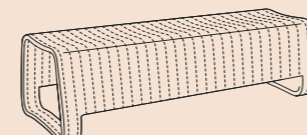
art. 9626
cm 46x37x42h



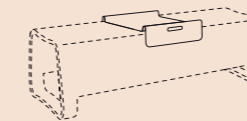
art. 9602
cm 104x104x78h
(Hs. cm 19+19)



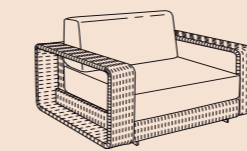
art. 9607
cm 86x86x19h



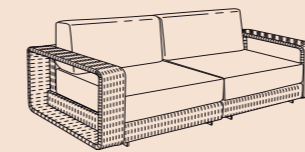
art. 9627
cm 130x46x42h



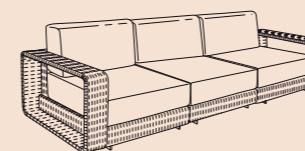
art. 9629
cm 39x37x10h



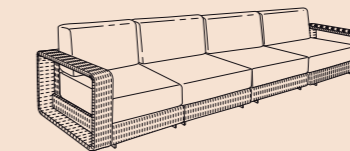
art. 9611
cm 111x102x78h
(Hs. cm 19+19)



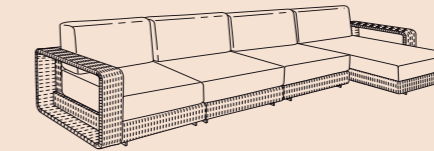
art. 9612
cm 186x102x78h
(Hs. cm 19+19)



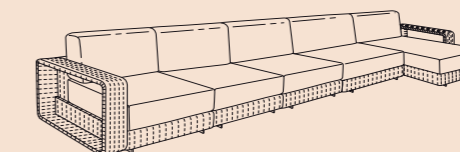
art. 9613
cm 261x102x78h
(Hs. cm 19+19)



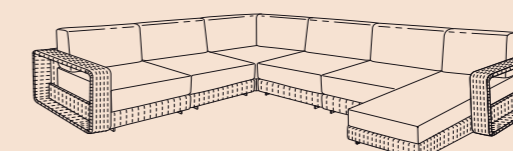
art. 9614
cm 336x102x78h
(Hs. cm 19+19)



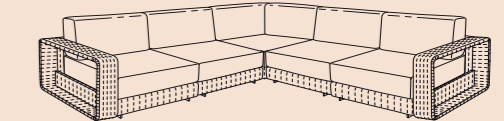
art. 9618
cm 347x102/177x78h
(Hs. cm 19+19)



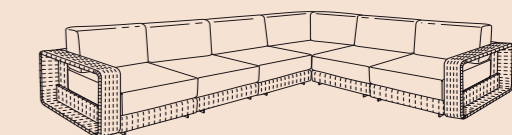
art. 9619
cm 422x102/177x78h
(Hs. cm 19+19)



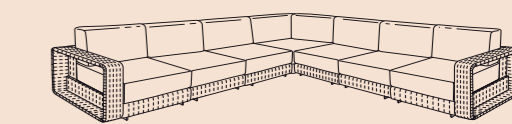
art. 9620
cm 358x272x102/177x78h
(Hs. cm 19+19)



art. 9615
cm 272x272x102x78h
(Hs. cm 19+19)



art. 9616
cm 347x272x102x78h
(Hs. cm 19+19)



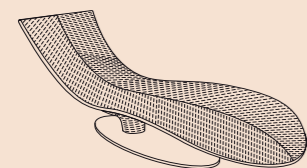
art. 9617
cm 347x347x102x78h
(Hs. cm 19+19)





Un atelier in continuo fermento, a metà strada tra un laboratorio creativo ed un officina di produzione. Fondato da Adriano Balutto si è arricchito della presenza della figlia, l'arch. Veronica Balutto, laureata all'Istituto Universitario di Architettura di Venezia (IUAV). Dal 2006 e' anche giornalista pubblicista.

Naturally born for creativity and planning, Studio Balutto has always been in movement to research new innovative ideas to be up to the expectations of the market trends and requests. Founded by Adriano Balutto, in the last years the atelier has had the creativity support of his daughter arch. Veronica Balutto, graduated at the University Institute of Architecture in Venice. Since 2006 she is also a journalist.

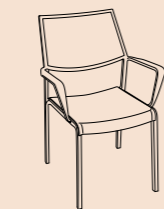


art. 9578
cm 70x182x76h
(Hs. cm 34+2)

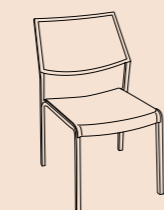


* Gli articoli contrassegnati con questo simbolo, sono di fine serie e s'intendono disponibili solo fino ad esaurimento scorte.
The articles marked with this symbol are out of production and only available until stocks last.
Die auslaufende Modelle sind nicht mehr in Produktion und können nur solange der Lagerbestand reicht, geliefert werden.
Les articles avec ce symbole sont hors production et encore disponibles jusqu'à épuisement des stocks.

Samba Rio



art. 9760FR
cm 58x60x86h
(Hs. cm 46)
batyline (Imo tested)

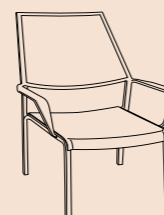


art. 9761FR
cm 48x58x82h
(Hs. cm 46)
batyline (Imo tested)

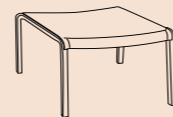


art. 9772 *

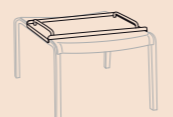
cm. 50x50x96,5
(Hs. cm 74)



art. 9762
cm 74x65x90h
(Hs. cm 41)
textilene



art. 9763
cm 55x50x41h
textilene



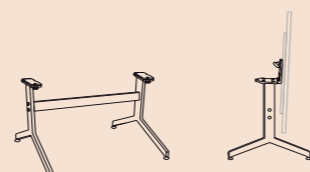
art. 9764 *

cm 50,5x34x6h



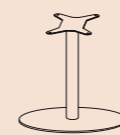
art. 9773 *

cm 52x52x71h



art. 9774 *

cm 78x72x73h



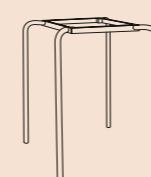
art. 9590
cm ø 72x72h

art. 9586R
cm ø 60x72h



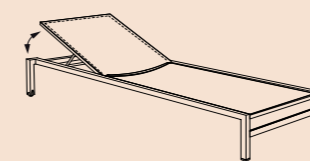
art. 9783

cm ø 60x107h



art. 9780

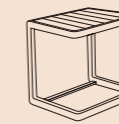
cm 70x70x107h



art. 9900A

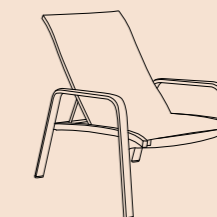
cm 78,5x195x32h
(Hs. cm 32+3)

batyline (Imo on request)

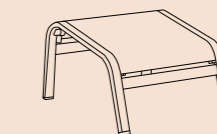


art. 9901
cm 40x40x45h
aluminum top

Playa

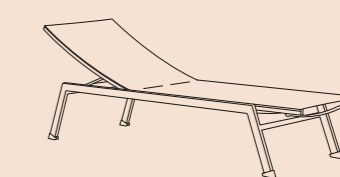


art. 9908
cm 64x124x99h
(Hs. cm 38+3)



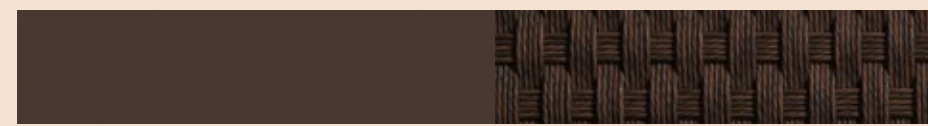
art. 9909

cm 53x63x34h



art. 9905

cm 61x189x34h
(Hs. cm 34+3)



coffee

sunloom chocolate



white

batyline white

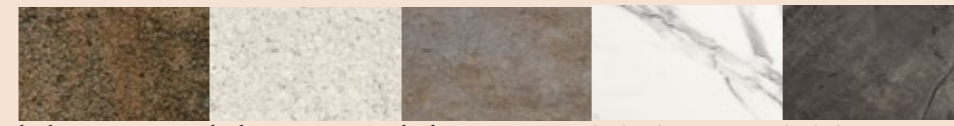
textilene white

terra

batyline terra

textilene terra

hpl white



hpl corten

hpl stone white

hpl stone grey

hpl white marble

hpl slate stone



white

batyline white
(Imo tested)

terra

batyline terra
(Imo tested)

hpl white

CREDITS

designers:

GV Plazzogna
Roberto Papparotto
Studio Balutto Associati
Santiago Sevillano
Technical Emotions
Antonio De Marco
Simone Fanciullacci

concept graphics & styling:

o2 STUDIO

photo:

STUDIO ROCCI

2024

Roberti®

ROBERTI RATTAN srl
Località Madonna di Loreto, 53/A
31020 Corbanese di Tarzo (TV) - ITALY
tel. +39 0438 933022 | fax +39 0438 933005

info@robertirattan.com
www.robertirattan.com